



EARTHCLIC

GEFF Eco Flooring Plank

Commercial | Hospitality | Residential





Goodrich Global
SINCE 1983



EarthClic

GEFF Eco Flooring

EarthClic redefines sustainable flooring with its remarkable composition: 80% organic material of which up to 50% is recycled content. This unique blend not only delivers exceptional visual appeal but also outperforms traditional resilient flooring in durability and day-to-day performance.

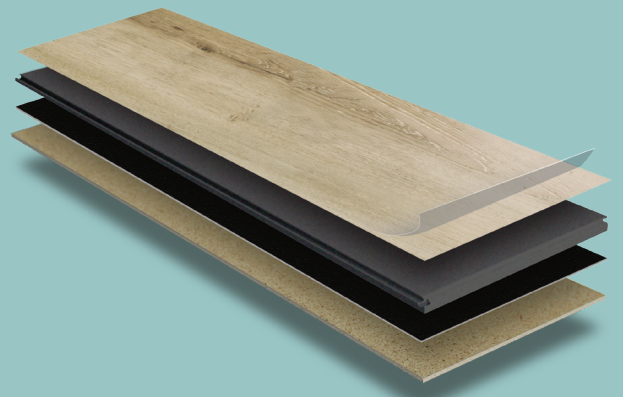
Engineered for strength, EarthClic offers 10 times better micro-scratch resistance (EN16094) compared to standard PVC-based floors, making it an ideal choice for heavy commercial use. Its aesthetic versatility ensures it enhances any environment.

Beyond its technical benefits, EarthClic stands as a symbol of innovation and responsibility, reflecting a deep commitment to both quality and environmental sustainability.

In a world increasingly focused on greener solutions, EarthClic isn't just flooring—it's a foundation for a more sustainable and responsible future.



1813 Mountain Grey | Random Ashlar Installation



Ultimate Scratch-Stain-Wear Resistant Surface

Deep Structured Decorative Layer

(Providing the look of a premium hardwood/tiles)

Eco Composite Core

(2X More Stable Than Standard SPC)

Convenient Click System

(For fast & easy glue-less installation)

Pre-Attached Cork Backing

(For additional comfort)

0.55mm Wear Layer Equivalent



UP TO 80% Of Organic Content



2X More Stable than Standard SPC



10X More Micro-Scratch Resistant Than Other Rigid Core Floors



Improved Loading Factors



Heavy Commercial Wear Resistance



100% PVC-FREE



UP TO 50% Recycled Content

Technical Specification

Product Type	Eco Flooring	Class of Use (EN 16511)	23 Heavy Domestic
Overall Thickness	10 mm (incl 2mm Cork)	Class of Use (EN 16511)	33 Heavy Commercial
Top Layer	0.55 mm wear layer equivalent	CE Marking	Certified
Size	236 x 1830 mm	IAC Gold	Certified
Packing	6 pcs (2.59 sqm)/box	GreenGuard Gold	Certified

CERTIFICATIONS & CHEMICAL PROPERTIES

Norm	Item	Test Method	Requirement	Result
EN 14041	Emissions	EN 717-1	≤0.12 mg/m ³	✓
Decret No.2011-321	Emissions	ISO 16000	VOC A+ (TVOC<1000 µg/m ³)	✓
CDPH	Emissions	Spectrometry, chromatography	TVOC ≤220 µg/m ³	✓
CPSIA & Prop 65	Ortho-Phthalates	CPSC-CH-C-1001-09.4	N.D.	✓
REACH	SVHC	Spectrometry, chromatography	≤0.1%	✓

PHYSICAL PROPERTIES

Norm	Item	Test Method	Requirement	Result
EN 16511	Thickness	EN 17539	$\Delta T_{ave} \leq 0.50$ mm	✓
	Length	EN 17539	≤1500 mm: $\Delta l \leq 0.50$ mm >1500 mm: $\Delta l \leq 0.30$ mm/m	✓
EN 16511	Width	EN 17539	$\Delta W_{ave} \leq 0.10$ mm	✓
	Squareness	EN 17539	≤0.20 mm	✓
	Straightness	EN 17539	≤0.30 mm/m	✓
	Flatness	EN 17539	Width: ≤0.20% (concave), ≤0.20% (convex) Length: ≤0.50% (concave), ≤1.00% (convex)	✓
	Opening	EN 17539	$O_{ave} \leq 0.15$ mm	✓
	Height Difference	EN 17539	$H_{ave} \leq 0.10$ mm	✓
	Light Fastness	ISO 105-B02:2014 procedure 3	≥6	✓
	Dimensional Stability	ISO 23999	≤0.15%	✓
	Curling	ISO 23999	≤2 mm	✓
	Wear Resistance	ISO 24338 Procedure A	≥4000 cycles	✓
	Impact Resistance-Big Ball	EN 13329	≥1600 mm	✓
	Micro-scratch Resistance	EN 16094 Procedure A	≤MSR-A2	✓
	Castor Chair	EN ISO 4918	25000 cycles	✓
	Effect of Furniture Leg	EN ISO 16581	No visible damage	✓
	Residual Indentation	EN ISO 24343-1	≤0.20 mm	✓
	Resistance to Staining	EN 438-2	Group 1 & 2: grade 5, Group 3: grade 4	✓
	EN 16511	Swelling	ISO 24336	≤12%
Locking Strength		ISO 24334	Long side ≥ 1.0 KN/m Short side ≥ 3.5 KN/m	✓
EN 14041	Reaction to Fire	EN 13501-1	Bfl-s1	✓
	Thermal Resistance (R)	EN 12664/ASTM C518	NA	✓
	Thermal Conductivity	EN 12664/ASTM C518	NA	✓
	Slipperiness	EN 13893	≥0.3	✓
Others	Slip Resistance (SCOF)	ASTM C1028	≥0.5	✓
	Slip Resistance (DCOF)	ANSI/NFSI B101.3-2012	≥0.4	✓
	Critical Radiantflux	ASTM E648	Class 1 (>0.45W/cm ²)	✓
	Smoke Density	ASTM E662	<450	✓
	NALFA Surface Swell (T-seam)	NALFA	≤Grade 2	✓
	Thickness Swell	ASTM F3261	Max 5% swell - with attached back	✓
	Airborne Sound Transmission	ISO 10140-2	N/A	67 dB*
	Impact Sound Transmission	ISO 10140-3	N/A	42 dB*
	Impact Sound Transmission (Reduction)	ISO 10140-1	N/A	17 dB
	Airborne Sound Transmission (STC)	ASTM E413-16	≥50	68*
	Impact Sound Transmission (IIC)	ASTM E989-6	≥50	67*
	Reducing Impact Sound (Transmission (ΔIIC))	ASTM E2190-16	NA	20

* The structure for sound performance test: 150 mm thick concrete with 300 mm cavity with 12 mm gypsum boards and 50 mm thick glass wool.
Disclaimer: The sound test results were achieved using a 6 mm (overall thickness) product and can only be used for reference.

Stocking



Item Name EC3230 White Chestnut
Size 236 x 1830 mm
Thickness 10 mm (incl 2mm Cork)
Package 6pcs (2.59sqm)/box



Item Name EC1776 Benchwood Brown
Size 236 x 1830 mm
Thickness 10 mm (incl 2mm Cork)
Package 6pcs (2.59sqm)/box



Stocking



Item Name EC1442 Hearty Cabin
Size 236 x 1830 mm
Thickness 10 mm (incl 2mm Cork)
Package 6pcs (2.59sqm)/box



1830 mm



Item Name EC1813 Mountain Grey
Size 236 x 1830 mm
Thickness 10 mm (incl 2mm Cork)
Package 6pcs (2.59sqm)/box



1830 mm





EC3230 White Chestnut | Random Brick Installation

* Images and renderings in this sample book are for illustration purpose and may not represent the real colour.



STOCKING

Item Name	EC3230 White Chestnut
Size	236 x 1830 mm
Thickness	10 mm (incl 2mm Cork)
Package	6pcs (2.59sqm)/box



EC1776 Benchwood Brown | Random Brick Installation

* Images and renderings in this sample book are for illustration purpose and may not represent the real colour.



STOCKING

Item Name	EC1776 Benchwood Brown
Size	236 x 1830 mm
Thickness	10 mm (incl 2mm Cork)
Package	6pcs (2.59sqm)/box



EC1442 Hearty Cabin | Random Brick Installation

* Images and renderings in this sample book are for illustration purpose and may not represent the real colour.



STOCKING

Item Name	EC1442 Hearty Cabin
Size	236 x 1830 mm
Thickness	10 mm (incl 2mm Cork)
Package	6pcs (2.59sqm)/box



EC1813 Mountain Grey | Random Ashlar Installation

* Images and renderings in this sample book are for illustration purpose and may not represent the real colour.



STOCKING

Item Name	EC1813 Mountain Grey
Size	236 x 1830 mm
Thickness	10 mm (incl 2mm Cork)
Package	6pcs (2.59sqm)/box



EC1140 Smoked Oak | Random Brick Installation

* Images and renderings in this sample book are for illustration purpose and may not represent the real colour.



INDENT

MOQ: 500 sqm

Item Name	EC1140 Smoked Oak
Size	236 x 1830 mm
Thickness	10 mm (incl 2mm Cork)
Package	6pcs (2.59sqm)/box



EC1144 Weathered Woodland | Random Brick Installation

* Images and renderings in this sample book are for illustration purpose and may not represent the real colour.



INDENT

MOQ: 500 sqm

Item Name	EC1144 Weathered Woodland
Size	236 x 1830 mm
Thickness	10 mm (incl 2mm Cork)
Package	6pcs (2.59sqm)/box



EC1149 Grey Gull | Random Brick Installation

* Images and renderings in this sample book are for illustration purpose and may not represent the real colour.



INDENT

MOQ: 500 sqm

Item Name	EC1149 Grey Gull
Size	236 x 1830 mm
Thickness	10 mm (incl 2mm Cork)
Package	6pcs (2.59sqm)/box



EC1462 Natural Oak | Random Brick Installation

* Images and renderings in this sample book are for illustration purpose and may not represent the real colour.



INDENT

MOQ: 500 sqm

Item Name	EC1462 Natural Oak
Size	236 x 1830 mm
Thickness	10 mm (incl 2mm Cork)
Package	6pcs (2.59sqm)/box



EC1767 Premier Oak | Random Brick Installation

* Images and renderings in this sample book are for illustration purpose and may not represent the real colour.



INDENT

MOQ: 500 sqm

Item Name	EC1767 Premier Oak
Size	236 x 1830 mm
Thickness	10 mm (incl 2mm Cork)
Package	6pcs (2.59sqm)/box



* Images and renderings in this sample book are for illustration purpose and may not represent the real colour.



INDENT

MOQ: 500 sqm

Item Name	EC1768 Empire Oak
Size	236 x 1830 mm
Thickness	10 mm (incl 2mm Cork)
Package	6pcs (2.59sqm)/box



EC1793 Tattered Timberland | Random Brick Installation

* Images and renderings in this sample book are for illustration purpose and may not represent the real colour.



INDENT

MOQ: 500 sqm

Item Name	EC1793 Tattered Timberland
Size	236 x 1830 mm
Thickness	10 mm (incl 2mm Cork)
Package	6pcs (2.59sqm)/box



EC1812 European Oak | Random Brick Installation

* Images and renderings in this sample book are for illustration purpose and may not represent the real colour.



INDENT

MOQ: 500 sqm

Item Name	EC1812 European Oak
Size	236 x 1830 mm
Thickness	10 mm (incl 2mm Cork)
Package	6pcs (2.59sqm)/box



EC1814 Silver Oak | Random Brick Installation

* Images and renderings in this sample book are for illustration purpose and may not represent the real colour.



INDENT

MOQ: 500 sqm

Item Name	EC1814 Silver Oak
Size	236 x 1830 mm
Thickness	10 mm (incl 2mm Cork)
Package	6pcs (2.59sqm)/box

Indent

MOQ 500 sqm

Size 236 x 1830 mm
Thickness 10 mm (incl 2mm Cork)
Package 6pcs (2.59sqm)/box



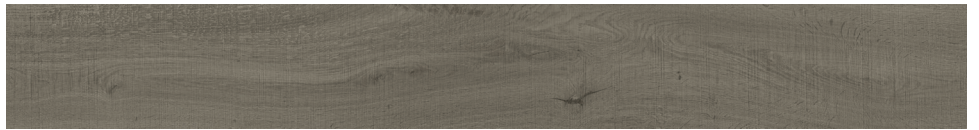
EC1140

Smoked Oak



EC1144

Weathered Woodland



EC1149

Grey Gull



EC1462

Natural Oak



EC1767

Premier Oak



EC1768

Empire Oak



EC1793

Tattered Timberland



EC1812

European Oak



EC1814

Silver Oak

Stay Connected - www.goodrichglobal.com | info@goodrichglobal.com

Singapore (HQ) | Malaysia | Thailand | Vietnam | India | Indonesia | United Arab Emirates | Philippines | China | Hongkong (China)

