

Goodrich Solutions for

Commercial & Education



Reception & Hallways • Offices & Meeting Rooms • Libraries & Classrooms • Retail & F&B • Other Areas

Wallcovering | Fabric | Carpet | Flooring

Using stylish designs and high-performance furnishings to improve your well-being



Goodrich Global
SINCE 1983



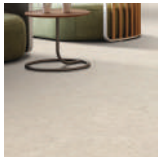


Amidst the bustling world of commercial businesses and the education sectors, every space becomes a stage upon which first impressions are forged and creativity ignites. From the welcoming entrances to the dynamic spaces of auditoriums, offices and classrooms, each area should be designed with style and functionality. Across these spaces where people work, play, relax and study, every detail should speak of inspiration and innovation. Join us on a journey through spaces where creativity blossoms, collaboration ignites, and every surface invites you to explore new possibilities.

Reception & Hallways

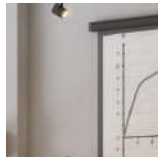
Setting first impressions is always crucial. If your company, school, or organisation takes pride in its brand when guests enter the building or office, then the **reception** and **hallways** are important areas to make them feel welcomed and engaged.

For **flooring**, one needs to be mindful that it should tackle the constant pounding of footwear. Vinyl tiles are paramount in providing an antislip and safe surface. Today's wood-grain patterns come in a wide array of colors and designs, adding warmth to any space. For flooring in reception areas, one should consider materials that give a sophisticated and cosy vibe. These surfaces should be easy to maintain and hygienic.



01 ORCHID 3000 (FLOORING)

- Anti-bacterial.
- Highly resistant to discolouration and contamination.
- Easy to clean and maintain.
- Singapore Green Building Product Certification (SGBC) certified: 4 Ticks Rating.
- World's first sustainable flooring made of carbon-reducing material.



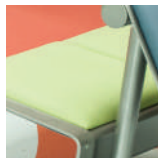
02 GOODRICH: PREMIERWALL EXPLORE (WALLCOVERING)

- Made in US.
- Durable and easy maintenance.
- Fire retardant and anti-microbial.
- Wide variety of textures and colours.



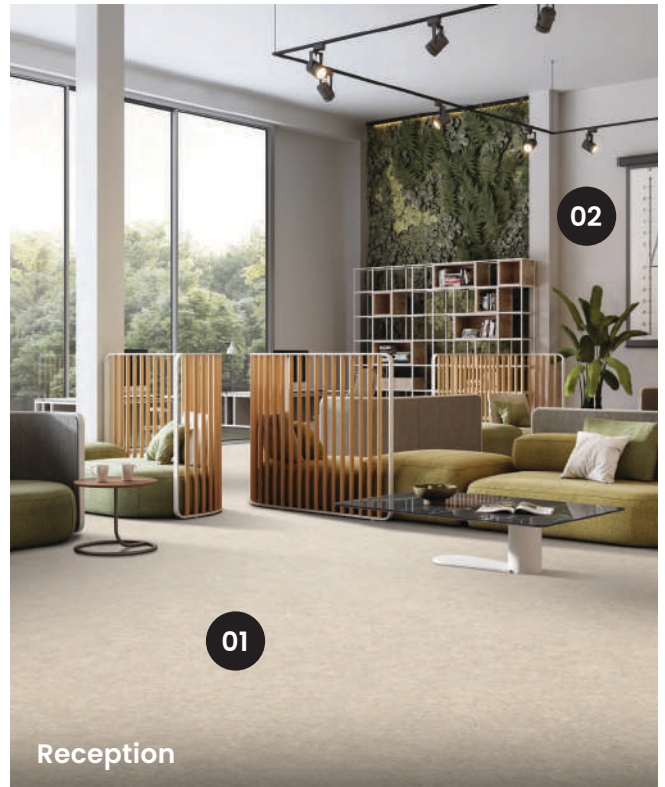
03 ARMSTRONG: MEDINTECH PLUS (FLOORING)

- Diamond 10™ technology coating for easy maintenance.
- Anti-bacterial and anti-fungal growth.
- Excellent chemical resistance and colour fastness.



04 GOODRICH: SHIELD LEATHERS (FABRIC)

- 100% pure silicone faux leather.
- Easy cleaning.
- High durability.
- Eco-friendly.
- Allergen-free.

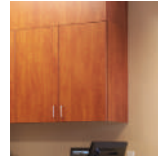


Reception



Reception

Even surfaces such as **walls** and ceilings, one can consider wallcoverings that provide top to bottom interior fit-outs. All these elements come together to create a welcoming reception or hallway to make your guests feel great.



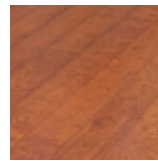
05
SANGETSU: REATEC (SELF ADHESIVE VINYL FILM)

- Versatile adhesive decorative film.
- Suitable for joineries, doors, windows, furnitures, columns, lift doors and panels.



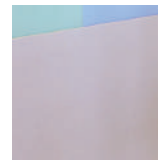
06
ARMSTRONG: STARLUX (FLOORING)

- Diamond 10™ technology coating for easy maintenance.
- Anti-bacterial and anti-fungal growth.
- Excellent chemical resistance and colour fastness.



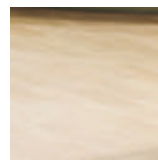
07
ARMSTRONG: TIMBERLINE (FLOORING)

- Heterogeneous vinyl sheet inspired from traditional and exotic species of wood.



08
KOROGARD: RIGID SHEETS (WALL PROTECTION)

- Can be applied to walls for total protection and decorative usage.
- High performance in anti-crush, anti-scratch, anti-abrasion and antiseptic.



09
GEFF NOVACLICK (FLOORING)

- Beautiful & robust.
- Affordable, versatile, and stylish.
- High durability.
- Easy to maintain.
- Water resistant.
- Singapore Green Building Product Certification (SGBC) certified.



10
GOODRICH: EXCLUSIVWALL ARTISTIC (WALLCOVERING)

- US-made handpainted wallcoverings.
- A touch of opulence and unmatched sophistication to your living space.

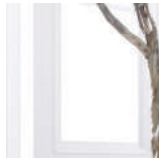
Auditoriums, Offices & Meeting Rooms

A well-designed **office** can offer elements of work, rest, and even play. For **walls**, add design, colour and energy with digital prints of your favourite image or photo. Consider making use of **Walltakers** for presentations and note-taking! **Glass films** help to reduce glare and reflectivity, so your employees are better focused in their work. For **flooring**, carpet tiles can help to endure the rigors of shoes shuffling across it while tackling the hard-rolling castors of chairs. These products also offer rich textures and colours to brighten up your flooring and perfect for high-traffic environments. Even upholstery for lounge chairs such as **shield leathers** can withstand the rigours of daily usage.



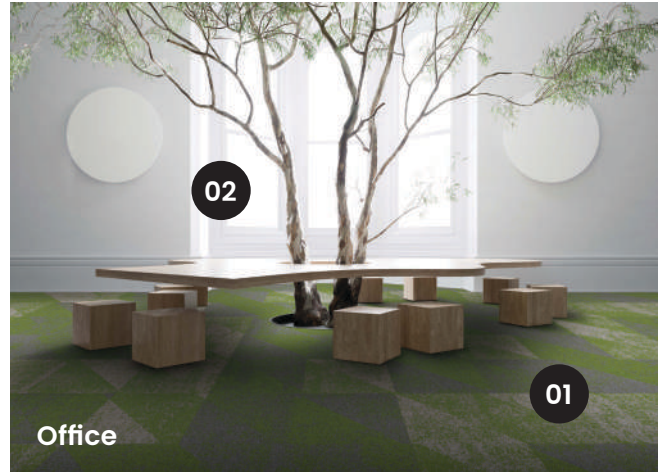
01
GOODRICH: CARPET TILE

- Rich texture and colour.
- Eco-friendly.
- Suitable for high traffic environments.



02
SANGETSU: CLEAS (GLASS FILM)

- Cuts UV radiation by 99+%.
- Scatter prevention.
- Energy-saving effects.
- Improve privacy.

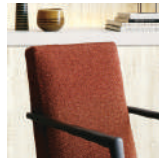


Office



03
GOODRICH: ECOWALL EMERALD (WALLCOVERING)

- Made from recycled fibres and printed using solar energy.
- Durable and washable.
- Breathable.
- Fire resistant.
- Wide variety of textures and colours.



04
GOODRICH: SHIELD LEATHERS (FABRIC)

- 100% pure silicone faux leather.
- Easy cleaning.
- High durability.
- Eco-friendly.
- Allergen-free.

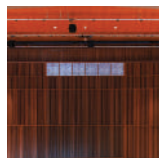


Meeting Room



05
FABRIC WALL PANEL (FABRIC) / CONCERTEX (FABRIC)

- Fire retardant and abrasive resistant.
- Wide array of designs such as contemporary, modern, geometric and luxury.



06
ZINTRA ACOUSTIC SOLUTIONS (WALL PANEL)

- Reduces echos, background noise and reverberations.
- Improves the aesthetics of your space.
- Wide range of colours and designs.



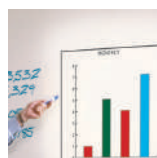
Auditorium

For **meeting rooms**, anti-fungal and high-resistant flooring can create a clean and safe environment. Even decorative films for boardroom tables, panel doors and columns can be considered for a well-designed space. All in all, a well-appointed office and meeting room can give birth to many productive, engaging work moments!

When it comes to educational spaces, having a conducive environment for listening is critical. Therefore, an **auditorium's** design needs to be safe, inspiring, and welcoming. Lightweight fabric-backed wall panels are often used to absorb sound while adding a decorative element. **Stage curtains** should also be carefully chosen for properties such as fire-retardant and abrasion-resistant. **Fabric Wall Panels** are essential for cladding vertical surfaces because they can absorb sound and reduce sonic vibrations, proving a modern, luxurious and contemporary aesthetic. All these elements come together to form a foundation that will create an engaging and safe space to be informed, educated, and engaged in whatever subject matter.



Meeting Room



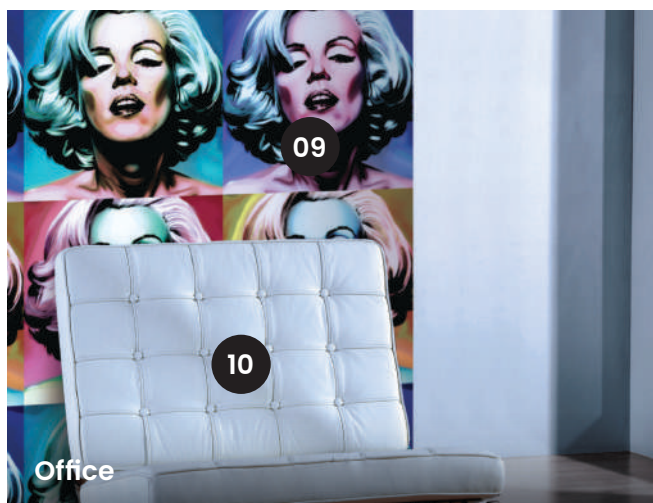
07
KOROGARD: WALLTALKERS (WALLCOVERING)

- Presentation wallcovering that combines the functionality of writing, projection and magnetic features.

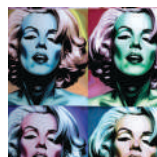


08
GOODRICH: SHIELD LEATHERS (FABRIC)

- 100% pure silicone faux leather.
- Easy cleaning.
- High durability.
- Eco-friendly.
- Allergen-free.

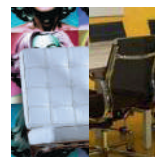


Office



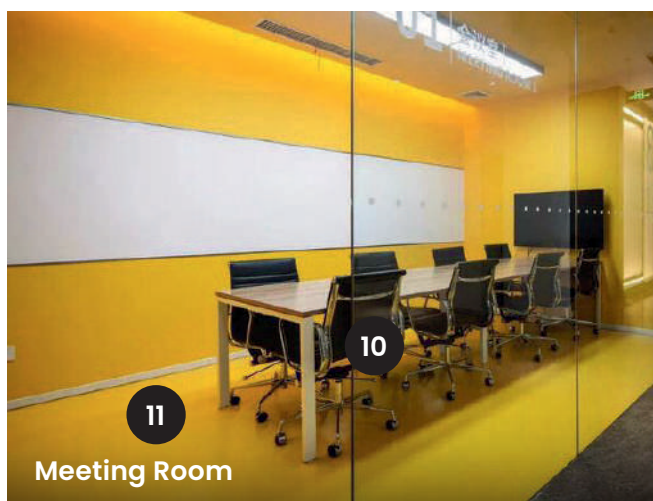
09
GOODRICH: DIGITAL PRINTED WALLCOVERING

- Add some life to your walls by using digital prints of your own design, favourite picture, or photo.



10
GOODRICH: CONCERTEX (FABRIC)

- Fire retardant and abrasive resistant.
- Wide array of designs such as contemporary, modern, geometric and luxury.



Meeting Room



11
ARMSTRONG: STARLUX / MEDINTECH PLUS (FLOORING)

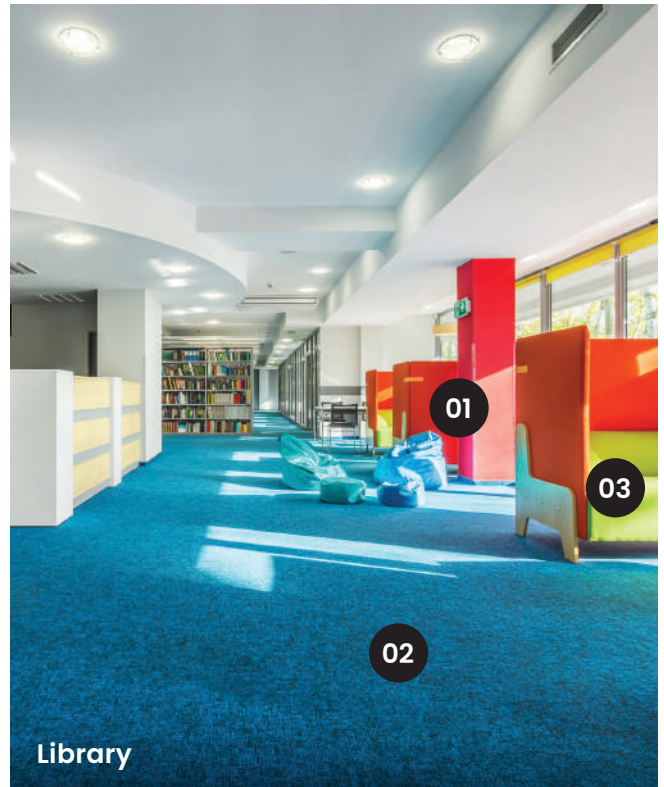
- Diamond 10™ technology coating for easy maintenance.
- Anti-bacterial and anti-fungal growth.
- Excellent chemical resistance and colour fastness.

Libraries & Classrooms

Libraries and **classrooms** are inevitably shared spaces used by many students and teachers. It should be a space that is safe and inspiring: allowing students to focus on school work and for teachers to carry out their duties. Light is critical when reading or studying in the library, but you don't want too much of the glare from sunlight streaming in. **Classrooms' flooring** takes the daily grind of feet pacing and walking over it.

There is also the constant moving of chairs and tables. Therefore, it is critical to incorporate **carpet tiles** to deck up the flooring of classrooms. They can take the hardest hits and provide a safe surface for feet to move and chairs to shift. **Curtains** are equally important in cutting off bright light from outside so students don't have to squint at their textbooks.

These are also fire retardant, anti-bacterial, washable and come in a large array of colours and designs. Glare that bounces off the **whiteboard** are also minimised through the installation of **glass film**.



Library



01 ZINTRA ACOUSTIC SOLUTIONS (WALL PANEL)

- Reduces echos, background noise and reverberations.
- Improves the aesthetics of your space.
- Wide range of colours and designs.



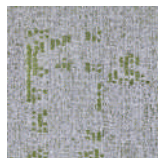
02 GOODRICH: CARPET TILE

- Rich texture and colour.
- Eco-friendly.
- Suitable for high traffic environments.



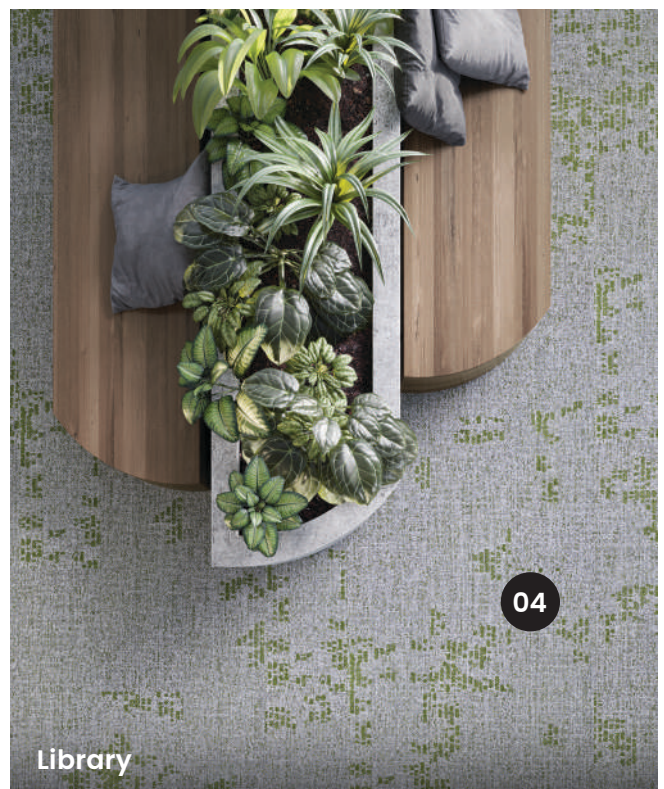
03 GOODRICH: SHIELD LEATHERS (FABRIC)

- 100% pure silicone faux leather.
- Easy cleaning.
- High durability.
- Eco-friendly.
- Allergen-free.



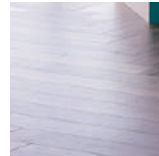
04 GOODRICH: CARPET TILE

- Rich texture and colour.
- Eco-friendly.
- Suitable for high traffic environments.



Library

Put these thoughtful elements together and you'll have an engaging classroom space where ideas can be expressed, information to be absorbed, and concentration to be maintained at all times.



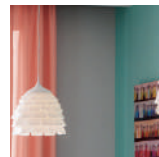
05
GEFF NOVA DRYBACK (FLOORING)

- Anti-bacterial.
- Certified Low VOCs.
- Easy maintenance.
- Easy installation.



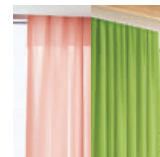
06
SANGETSU: CLEAS (GLASS FILM)

- Cuts UV radiation by 99+%.
- Scatter prevention.
- Energy-saving effects.
- Improves privacy.



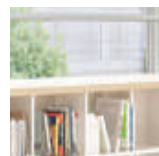
07
GOODRICH: PREMIERWALL EXPLORE (WALLCOVERING)

- Made in US.
- Durable and easy maintenance.
- Fire retardant and anti-microbial.
- Wide variety of textures and colours.



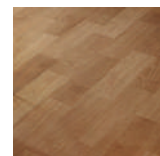
08
SANGETSU: CONTRACT CURTAIN (FABRIC)

- Washable.
- Rich in colour and texture.
- Wide variety of designs.
- Available for healthcare, gym, shower curtains, education and public places.



09
SANGETSU: REATEC (SELF ADHESIVE VINYL FILM)

- Versatile adhesive decorative film.
- Suitable for joineries, doors, windows, furnitures, columns, lift doors and panels.



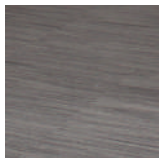
10
SANGETSU S FLOOR (FLOORING)

- Water resistant.
- Wide range of designs.
- Unique embossing.
- Options available for anti-slip and shock-absorbing properties.

Common Areas: GYMS, INFIRMARIES, LOCKER ROOMS, SHOWER ROOMS & RESTROOMS

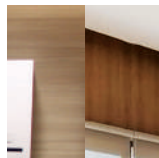
These common areas are some of the spaces that take the hardest beatings from the pillage of feet, spillages, sweat, pounding and splashes. At the **gym**, hard-wearing flooring should be deployed to tackle heavy foot-fall and the pounding of weights. Ensure you get materials that can withstand scratches and scuffs from gym weights. Even **flocked flooring** can tackle the onslaught of dropped weights and pounding of feet. It is durable, comfortable and hygienic. Also, roller blinds help to cut glare.

Shower rooms need to be safe and secure to withstand moisture, dirt and mold, so choose floorings that can tackle these issues. Shower rooms need not be staid and clinic because their versatile **adhesive decorative film** can inject design, colour and warmth. **Glass film** can provide some tinted privacy while reducing colour fading on walls. For shower room privacy, choose **contract curtains** that are easy to maintain with a wide array of colours and designs to suit every customisation.



01
GOODRICH: CARPET TILE

- Rich texture and colour.
- Eco-friendly.
- Suitable for high traffic environments.

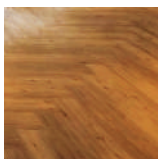


02
GOODRICH: WIDEWALL MIXTURE (WALLCOVERING)

- Durable and low VOC.
- Easy to clean and maintain.
- Fire retardant and anti-microbial.



Locker Room



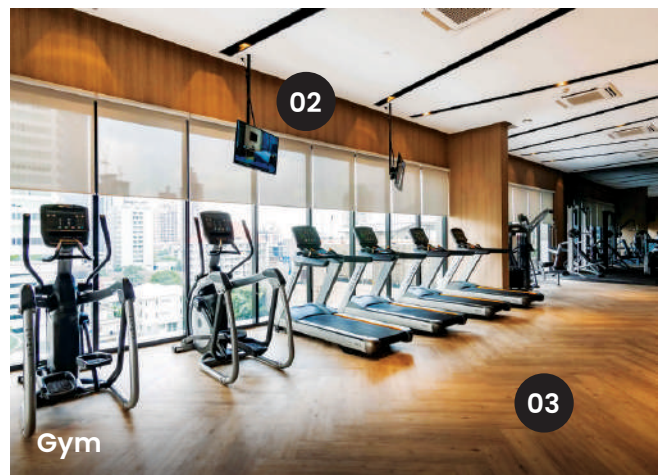
03
ORCHID 3000 (FLOORING)

- Anti-bacterial.
- Highly resistant to discolouration and contamination.
- Easy to clean and maintain.
- Singapore Green Building Product Certification (SGBC) certified: 4 Ticks Rating.
- World's first sustainable flooring made of carbon-reducing material.

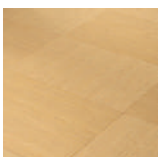


04
SANGETSU: CONTRACT CURTAIN (FABRIC)

- Washable.
- Rich in colour and texture.
- Wide variety of designs.
- Available for healthcare, gym, shower curtains, education and public places.

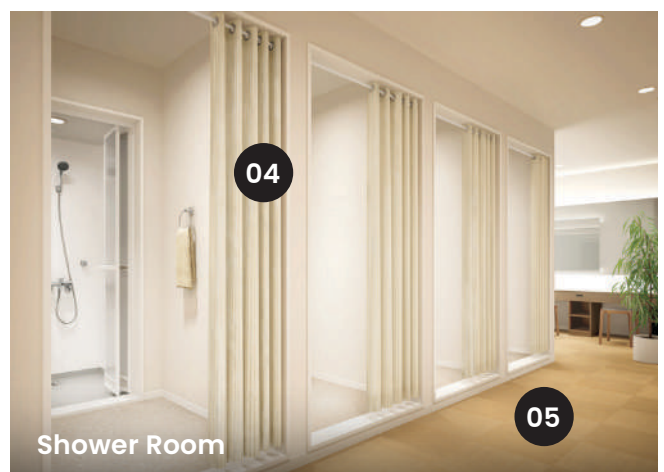


Gym



05
SANGETSU: FLOOR TILE (FLOORING)

- Vibrant designs available in a multitude of sizes.
- Easy to clean and maintain.
- Eco-friendly



Shower Room



Infirmery

07

The curtains of an **infirmery** should be fire retardant, anti-bacterial and washable to maintain safety and cleanliness. As the **locker room** is a high-traffic area, carpet tiles with rich textures and colours can help enliven the space. Additionally, high resilience is an important consideration for safety and durability, considering the amount of traffic and hard knocks it may endure.

Don't forget - you can always inject colour and inspiration using proper lightweight wallcoverings in all these spaces!



Common Area

08



07
SANGETSU: CONTRACT CURTAIN (FABRIC)

- Washable.
- Rich in colour and texture.
- Wide variety of designs.
- Available for healthcare, gym, shower curtains, education and public places.



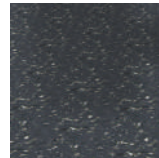
08
ONEWOOD (FLOORING)

- High durability.
- Sustainable and can be refurbished.
- Low flame spread and fire resistant.
- Termite resistant.
- Water resistant.
- Singapore Green Building Product Certification (SGBC) certified.



Gym

09



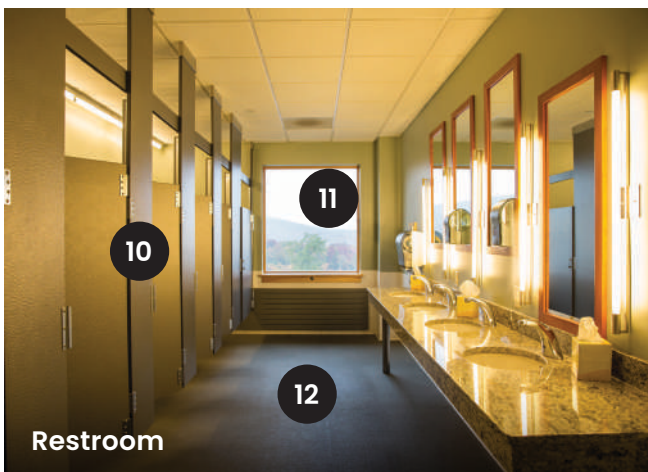
09
GOODRICH RUBBER (FLOORING)

- Easy Installation.
- Water resistant.
- Recycle rubber.



10
P3TEC - ADVANCED WALL PROTECTION (WALLCOVERING)

- Protects against impact, chemical and abrasion.
- Easy to install and handle.
- Wide compelling designs, textures and colours.



Restroom

10

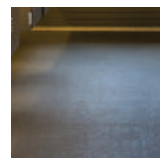
11

12



11
SANGETSU: CLEAS (GLASS FILM)

- Cuts UV radiation by 99+%.
- Scatter prevention.
- Energy-saving effects.
- Improve privacy.



12
SANGETSU S FLOOR (FLOORING)

- Water resistant.
- Wide range of designs.
- Unique embossing.
- Options available for anti-slip and shock-absorbing properties.

Research Laboratories & Food Preparations

Research Laboratories, kitchens and restrooms may not be the most inviting areas to learn and be taught. Safety is paramount when creating these three zones. For labs, **flooring** should take the rigors of busy footfall, occasional chemical spillages, and have anti-bacterial properties to maintain cleanliness.

Also, **roller blinds** help to cut glare to maintain focus, and offer energy-saving effects. In the **kitchen**, safety is also top priority so flooring with slip-resistant properties and easy maintenance will avert accidents.



01

ARMSTRONG: MEDINTECH PLUS (FLOORING)

- Diamond 10™ technology coating for easy maintenance.
- Anti-bacterial & anti-fungal growth.
- Excellent chemical resistance & colour fastness.



02

SANGETSU S FLOOR (FLOORING)

- Water resistant.
- Wide range of designs.
- Unique embossing.
- Options available for anti-slip and shock-absorbing properties.

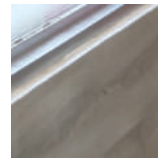
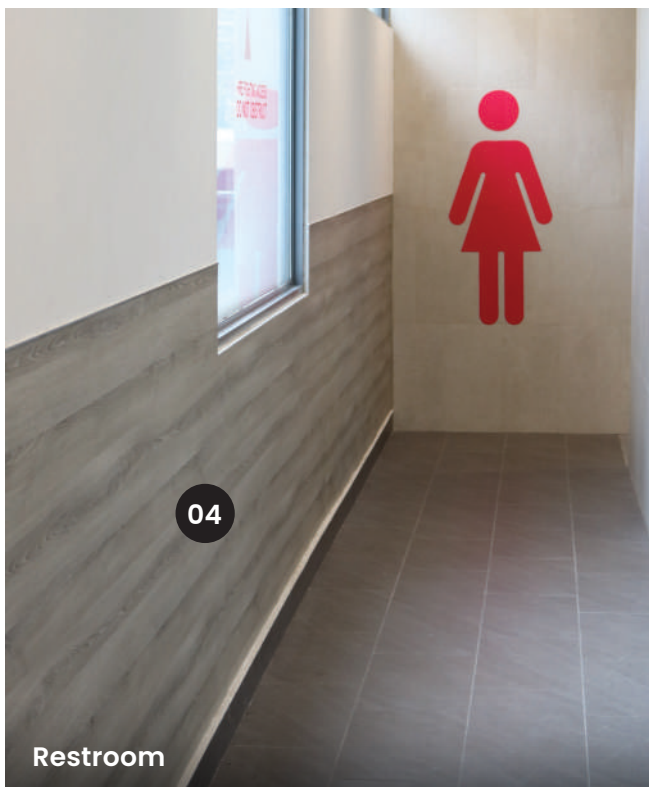


For **toilets**, slip-resistant flooring with easy to clean properties are key considerations for a safe environment. **Glass film** in toilets help to protect the glass while cutting glare from the outside while permitting a decent level of privacy in toilets. In the corridor leading to the toilet, **wall protection** can be applied to walls to ensure complete protection while also serving a decorative purpose.



03
SANGETSU: CLEAS
(GLASS FILM)

- Cuts UV radiation by 99+%.
- Scatter prevention.
- Energy-saving effects.
- Improve privacy.



04
KOROGARD: RIGID SHEET
(WALL PROTECTION)

- Can be applied to walls for total protection and decorative usage.
- High Performance features such as anti-collision, anti-scratch and anti-abrasion.

Shop Floors, Salons & Supermarkets

Shop floors, salons and **supermarkets** are all high-traffic areas, so their decorative and functional spaces should never be given an after-thought. **Shield leathers** work their decorative magic to clad vertical surfaces, booths and display countertops. Their high-durability and easy-to-clean properties make it easy to maintain.

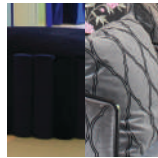
Inject creativity to these zones by utilising digital printed wallcoverings of your favourite photo or image. For **flooring**, consider the anti-bacterial, antifungal materials to keep it sanitised and easy-to-clean.

Even **engineered timber** with their luxurious wood grain is resilient to hard knocks, and easy to decorate can create a plush, welcoming space for your customers.



01
SANGETSU: CLEAS (GLASS FILM)

- Cuts UV radiation by 99+%.
- Scatter prevention.
- Energy-saving effects.
- Improve privacy.



02
CONCERTEX (FABRIC)

- Fire retardant and abrasive resistance.
- Wide array of designs such as contemporary, modern and geometrics.



Shop Floor



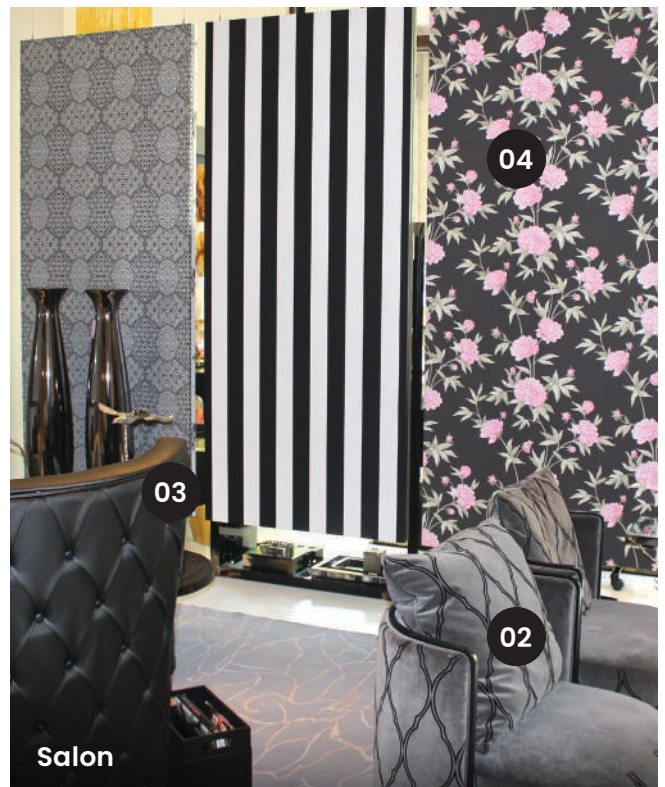
03
GOODRICH: SHIELD LEATHERS (FABRIC)

- 100% pure silicone faux leather.
- Easy cleaning.
- High durability.
- Eco-friendly.
- Allergen-free.

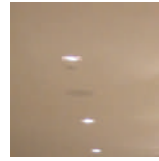


04
GOODRICH: EXCLUSIVWALL ARTISTIC (WALLCOVERING)

- US-made handpainted wallcoverings.
- A touch of opulence and unmatched sophistication to your living space.



Salon



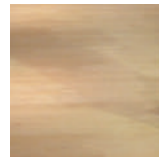
05
ZINTRA ACOUSTIC SOLUTIONS (CEILINGS)

- Reduces echos, background noise and reverberations.
- Improves the aesthetics of your space.
- Wide range of colours and designs.



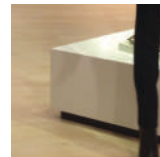
06
GOODRICH: WIDEWALL MIXTURE (WALLCOVERING)

- Durable and low VOC.
- Easy to clean and maintain.
- Fire retardant and anti-microbial.



07
GEFF: ENGINEERED TIMBER (FLOORING)

- Real wood surface for a luxurious experience.
- Certified green and eco-friendly.
- Available in a wide array of species and grades.



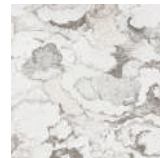
08
SANGETSU: REATEC (SELF ADHESIVE VINYL FILM)

- Versatile adhesive decorative film.
- Suitable for joineries, doors, windows, furnitures, columns, lift doors and panels.



09
ARMSTRONG: MEDINTECH PLUS (FLOORING)

- Diamond 10™ technology coating for easy maintenance.
- Anti-bacterial & anti-fungal growth.
- Excellent chemical resistance & colour fastness.



10
GOODRICH: PREMIERWALL AZURITE (WALLCOVERING)

- Made in US.
- Durable and easy to install.
- Fire retardant, low VOC, and anti-microbial.

Bars & Restaurants

A **restaurant** may be recognised for its food but if the ambience does not convince people to hang out and eat comfortably then it defeats the purpose. We eat with our eyes, so a well-designed restaurant should have surfaces that make people feel welcomed and comfortable.

Introduce creativity to walls with digital wallcoverings of your favourite photo or image. **Roller blinds** inject some vertical aesthetics to make it welcoming, while preventing glare from the sun. **Glass films** on sliding glass doors also help to reduce reflectivity from the outside.

For upholstery of chairs and banquettes, one should consider easy-to-clean 100% pure silicone **shield leather** to take the daily beatings. Even **broadloom carpets** will help to create warmth and mood to your F&B space.



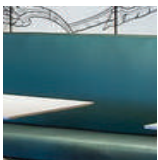
01
GOODRICH: AXMINSTER
(BROADLOOM CARPET)

- Extensive collection of beautiful designs and qualities.
- Suitable for high-traffic areas.
- Customisation available.



02
CONCERTEX (FABRIC)

- Fire retardant and abrasive resistance.
- Wide array of designs such as contemporary, modern and geometrics.



03
GOODRICH: SHIELD
LEATHERS (FABRIC)

- 100% pure silicone faux leather.
- Easy cleaning.
- High durability.
- Eco-friendly.
- Allergen-free.

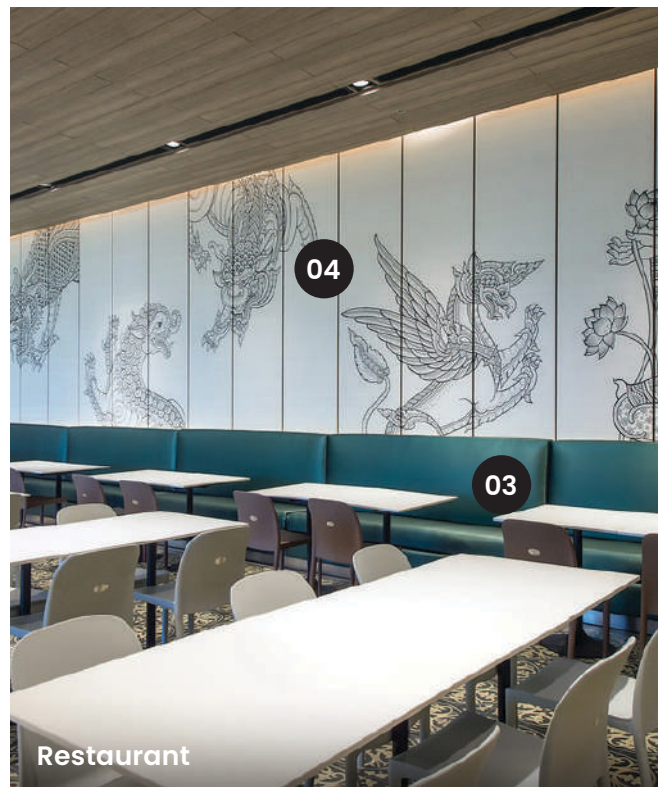


04
GOODRICH: DIGITAL
PRINTED WALLCOVERING

- Add some life to your walls by using digital prints of your own design, favourite picture, or photo.



Restaurant



Restaurant

For alfresco areas, **decking** that provides high resistance and anti-slip resistance can avert waiting accidents. All these elements come together to create a cosy, stylish and engaging F&B area to attract new customers and engage your current patrons!



05

07

06

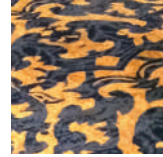
Restaurant



05

GOODRICH: GOODWALL SEED (WALLCOVERING)

- Made in Japan.
- Durable, easy to clean and maintain.
- Fire retardant and anti-microbial.
- Singapore Green Building Product Certification (SGBC) certified.



06

GOODRICH: AXMINSTER (BROADLOOM CARPET)

- Extensive collection of beautiful designs and qualities.
- Suitable for high-traffic areas.
- Customisation available.



07

08

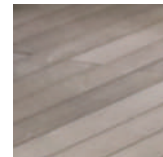
Restaurant



07

SANGETSU: CLEAS (GLASS FILM)

- Cuts UV radiation by 99+%.
- Scatter prevention.
- Energy-saving effects.
- Improve privacy.



08

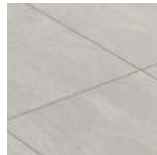
ONEWOOD: DECKING (FLOORING)

- High durability.
- Sustainable and can be refurbished.
- Low flame spread and fire resistant.
- Termite resistant.
- Water resistant.
- Singapore Green Building Product Certification (SGBC) certified.



09

Bar



09

ORCHID 3000 (FLOORING)

- Anti-bacterial.
- Highly resistant to discolouration and contamination.
- Easy to clean and maintain.
- Singapore Green Building Product Certification (SGBC) certified: 4 Ticks Rating.
- World's first sustainable flooring made of carbon-reducing material.



10

CONCERTEX (FABRIC)

- Fire retardant and abrasive resistance.
- Wide array of designs such as contemporary, modern and geometrics.



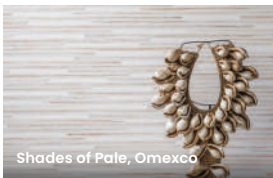
Eco-Friendly Furnishing

Our sustainability strategy is focused towards minimising environmental impact, whilst protecting and preserving the legacy of beautiful craftsmanship. Our eco-friendly product offering reduces our carbon footprint, greenhouse gas emissions, electricity and water usage, harmful chemicals and landfill waste. We remain committed to prioritising responsible forestry and materials that are not harmful to the environment.

WALLCOVERING

Ecowall: Ideal for residential, hospitality, and commercial

- Ecological non-woven wallcovering made with FSC-certified materials
- Printed with solar energy, using water-based, solvent-free colours



Shades of Pale, Omexco



Antares, Omexco

Widewall/Premierwall: Ideal for residential, hospitality, and commercial

- Zero usage of heavy metals such as lead, mercury, cadmium and chromium
- Class A fire rated
- Low VOC



Ampd, Symphony



Vogue Pleat, Vycon

VINYL FLOORING

Ideal for healthcare and hospitality

- Flooring materials are subjected to stringent procedures by certified organisations for a safe environment
- Vinyl is tested for low levels of TVOC and formaldehyde air emissions



Vinyl Sheet, Armstrong Meditech Plus



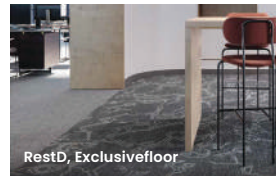
Vinyl Planks, GEFF Novaclick

CARPET

Exclusive floor: Ideal for residential, hospitality, and commercial

Premier floor: Ideal for residential, hospitality, and commercial

- Eco-fresh self-renewal colour reducer treatment
- Micro shield anti-microbial treatment
- Stain shield treatment
- Green Label Plus Certified



RestD, Exclusivefloor



Lino

CERTIFICATIONS FOR OUR ECO-FRIENDLY PRODUCTS



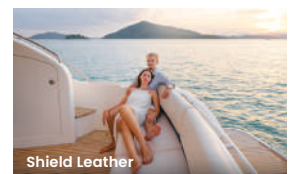
SHIELD LEATHER PVC SILICONE

Ideal for residential, healthcare, commercial and hospitality

- Free of PVC, phthalates, solvent, DMF, heavy metals and harmful chemicals
- Complies with California 01350 VOC emission standards
- Certified Gold for indoor air quality by SCS Global Service
- Flame retardant
- Does not degrade from hydrolysis chemical
- Anti-mildew ASTM G-21
- Skin-friendly and allergen-free



Shield Leather



Shield Leather

Project Listings



Singapore Post (Flooring)



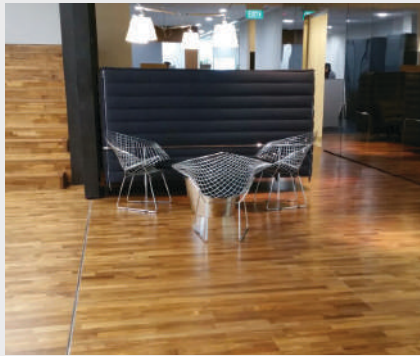
Sofitel So Bangkok, Thailand (Fabric)



Sultan Mosque, Singapore (Carpet)



Singapore Indoor Stadium (Carpet)



Office, Singapore (Flooring)



Robinsons The Hereen Window, Singapore (Wallcovering)



Common Area, Japan (Glass Film)



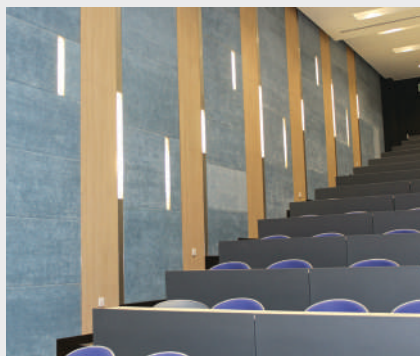
Bukit View Secondary School, Singapore (Flooring)



GIG International School, Singapore (Flooring)



Leiden Library, Indonesia (Carpet)



Ngee Ann Polytechnic, Singapore (Fabric Panels)



Tazkia Ibis, Malang, Indonesia (Flooring)

SINGAPORE

Bukit View Secondary School • Casino Main Gaming @ Resorts World Sentosa • Cathay - Jem Platinum Movie Suites • Changi Airport • Crowne Plaza • F1 Pit Building • Gaming Areas at Marina Bay Sands • GIG international school • Grand Asia Restaurant @ Odean Tower • HSBC Building @ Collyer Quay • INSEAD Asia Campus • ITE Ang Mo Kio • ITE Simei • Lok Restaurant @ Carlton Hotel Singapore • Marina Bay Cruise Centre Singapore • MAS Building @ Shenton Way • Millenia Tower Min Jiang Restaurant @ Goodwood Park Hotel • MOH Building @ Harbourfront Centre • Nanyang Polytechnic • Nanyang Technological University • Ngee Ann Polytechnic • Northpoint City • NUS Staff Club • Raffles Education Square • Reny Transport & Trading Co • SCDF HQ Command Centre • SGX Centre • Shaw Theatres - Lido Cineplex • Singapore Economic Development Board (EDB) • Singapore Polytechnic • Singapore University of Technology & Design • SP Group • The Legends Fort Canning Park

CHINA / HONG KONG

ANZ Banking Group • Ascendent Capital Partners (Asia) Ltd • Bank Julius Baer & Co Ltd • Berkley Insurance Co, HK branch • Cheung Kong Centre • China Everbright Securities (HK) Ltd • Chinalin Securities (HK) Co Ltd • Chiyu Banking Corporation • CIMB Bank Berhad, Hong Kong Branch • Chinese University of HK, Hong Kong • DBS bank, Hong Kong • Future Land Capital Group • Future Land Resources Capital Group • Harbour City (corridors) • HK Exchanges and Clearing Ltd • Industrial Bank, Hong Kong branch • Novo Group Ltd • OCBC Wing Hang Bank Ltd • SHK Financial Group • UBS Bank

INDIA

Adani group • Ajanta Pharma • Chambers of Jaitley and Bakshi • Dlf Corporate offices • Flipkart office • Gianni Outlets • Khazana group • Looks Salon • Mahagun Corporate office • Malabar Gold Pvt Ltd • Pioneer Urban • S.S Exhibitions • Seth Group • Studiokon Ventures Pvt Ltd • Think Different Enterprises

INDONESIA

Bank DKI, Jakarta • Bina Bangsa International School, Semarang • Bina Nusantara University Bandung • Bina Nusantara University Bekasi • Brawijaya University Kediri • Deltomed Office, Alam Sutera, BSD • Dian Nuswantoro University • Diponegoro University, Malang • Gaikindo Office, Jakarta • Garuda Indonesia HM Sampoerna Office, Jakarta • Holcim Building, Makassar • KPM Office Building Antasari, Jakarta • MAP Office, Jakarta • Mercuru Buana University • Mitra Adi Perkasa Office, Jakarta • Mr.Fox, Surabaya • Muhammadiyah Malang University, Malang • One Icon, Surabaya • Pangkep 33, Malang • Pelita Harapan University • Podomoro University, Jakarta • Swiss German University, Alam Sutra, Tangerang • Tazkia Ibis, Malang • The East Building, Jakarta • Universitas Islam Indonesia, Yogyakarta • Universitas Negeri Semarang • Universitas Negeri Yogyakarta, Yogyakarta • Wisma Nusantara Office, Jakarta • XL Tower, Jakarta

MALAYSIA

AEON Departmental Store (All Stores) • AIMST University, Kedah • Alliance Bank (All Branches) • CIMB Bank, Menara CIMB, KL Sentral, Kuala Lumpur • DeGem Berhad (HQ Office & Retail Outlets), Kuala Lumpur • ENCORP Berhad Corporate Office, The Strand, Selangor • EPF (KWSP) Learning Centre, Bangi, Selangor • Google Office, Menara One Sentrum, Kuala Lumpur • Guocoland HQ Office, Damansara City, Kuala Lumpur • ICBC Bank, Menara Maxis, Kuala Lumpur • IKEA Cheras, Kuala Lumpur & Damansara, Selangor • IPC (Ikano Power Centre) Shopping Centre, Selangor • Institute Aminuddin Baki, Kuching, Sarawak • KDU University College, Damansara, Kuala Lumpur • KL Gateway Corporate - Office & Business Suite, Kuala Lumpur • Land Custody and Development Authority (LCDA), Kuching, Sarawak • London Stock Exchange Office, Kuching, Sarawak • Menara Shell, KL Sentral, Kuala Lumpur • Monash University, Bandar Sunway, Selangor • Oasis International School, Kuala Lumpur • SEGI University College, Kota Damansara, Selangor • Sekolah Seni Malaysia Santubong, Kuching, Sarawak • SMK Cyberjaya, Cyberjaya, Selangor • SMK La Salle, Petaling Jaya, Selangor • SMK Sentul Utama, Sentul, Kuala Lumpur • Sri Garden International School, Taman Maluri, Cheras, Kuala Lumpur • Sunway University, Bandar Sunway, Selangor • Swinburne University, Kuching, Sarawak • Taylor's College, Subang Jaya Campus, Selangor • University of Reading, Johor

THAILAND

AIS Office • Emquartier Mall • H&M Office @ Central World • Habitat Thailand • IKEA Thailand • King Power • Krungthai Bank • La Mer Counter • Regus Bhiraj Tower Bangkok • SB Design Square • Siam Paragon • SK II Counter • Starbucks Coffee • True Corporation @ Ratchada • Uniqlo Store

VIETNAM

• Hoa Sen University, Hanoi

UNITED ARAB EMIRATES

Cleveland Clinic, Abu Dhabi • Creative Studio Office, Dubai • Dubai Airport Expansion, Dubai • Emirates Golf Club, Dubai • Green Facilities Management Office, Dubai • Izel Restaurant, Dubai • Mashreq Bank, Fujairah • Oriental Expression Studio, Dubai • ProGolf, Sharjah • Robert Allen Middle East Office, Dubai • State Audit Bureau, Doha, State of Qatar • The Football Center, Dubai • VFS Global, Deira, Dubai

Product Catalogues

DISCOVER A WORLD OF EXQUISITE DESIGNS AT YOUR FINGERTIPS.



Ecowall Emerald



Zintra Acoustic Solutions



Widewall Mixture



Goodwall Seed



Exclusivewall Artistic



Premierwall Explore



Digital Wallcovering

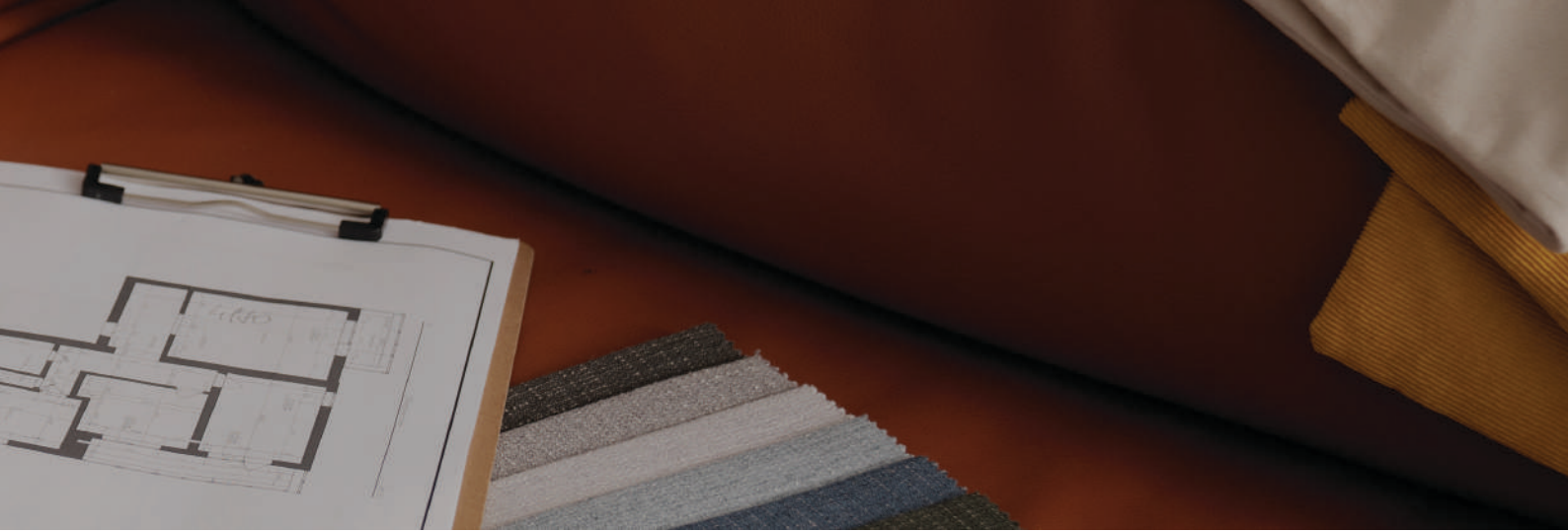


Walltalkers



P3TEC





**Sangetsu
CLEAS**



**Sangetsu
REATEC**



**Armstrong
Medintech Plus**



**Armstrong
Starlux**



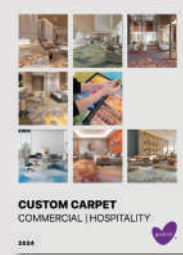
**GEFF LVT Green
Orchid 3000**



**GEFF
Nova Dryback
& Novaclick**



**Goodrich Carpet
Tiles | Broadloom | Rug**



**Goodrich Custom
Carpet
Commercial | Hospitality**



Shield Leather



GOODRICH GLOBAL Headquarters

SINGAPORE (HQ)

www.goodrichglobal.com

GOODRICH GLOBAL PTE LTD (OFFICE)

Goodrich Building,
8 Changi South Lane #05-01, Singapore 486113

T: (+65) 6787 8787 | F: (+65) 6788 7733
E: info@goodrichglobal.com

GOODRICH SINGAPORE (GALLERY)

Goodrich Building,
8 Changi South Lane #01-01, Singapore 486113

T: (+65) 6788 6868 | F: (65) 6586 8794
E: gallery@goodrichglobal.com.sg



www.goodrichglobal.com



Global Addresses

GOODRICH GLOBAL & SANGETSU GOODRICH Regional Offices & Galleries

MALAYSIA

www.goodrichglobal.com.my

JOHOR BAHRU, JOHOR (OFFICE)

Goodrich Global Sdn. Bhd
Infinity 8 Reserve Eco Palladium (Block A)
A-04-01, Pusat Perdagangan Ekoflora,
Jalan Ekoflora 7/3, Taman Ekoflora,
81100 Johor Bahru, Johor

T: (+603) 6201 5757 | F: (+603) 6201 8257
E: info@goodrichglobal.com.my

KUALA LUMPUR (OFFICE)

Goodrich Global Sdn. Bhd
Unit M-2-2, Block M, Plaza Damas,
Phase II, Jalan Sri Hartamas 1/70A,
50480 Kuala Lumpur, Malaysia

T: (+603) 6201 5757 | F: (+603) 6201 8257
E: info@goodrichglobal.com.my

KUALA LUMPUR (GALLERY)

A-0-3 & A-1-3, Block A, Plaza Damas, Jalan Sri
Hartamas 1, 50480 Kuala Lumpur, Malaysia.

T: (+603) 6211 9575
E: info@goodrichglobal.com.my

KUCHING, SARAWAK (OFFICE & GALLERY)

Goodrich Global Sdn. Bhd
No. 527 Ground Floor,
Jalan Ang Cheng Ho,
93100 Kuching, Sarawak, Malaysia

T: (+6082) 415 757 | F: (+6082) 255 757
E: info@goodrichglobal.com.my

THAILAND

www.sangetsu-goodrich.co.th

BANGKOK (OFFICE)

Sangetsu Goodrich (Thailand) Co.,Ltd.
23/77 Sorachai Building 20th Floor,
Soi Sukhumvit 63, Sukhumvit Road,
Klongton Nua, Wattana, Bangkok 10110

T: (66) 2115 1838 | F: (66) 2115 1354
E: info@sangetsu-goodrich.co.th

BANGKOK (GALLERY)

Sangetsu Goodrich Gallery Thailand
58 Soi Sukhumvit 63, Sukhumvit Road,
Klongton Nua, Wattana, Bangkok 10110

T: (66) 2381 7778 | F: (66) 2381 7773
E: info@sangetsu-goodrich.co.th

VIETNAM

www.sangetsu-goodrich.vn

HO CHI MINH CITY (OFFICE & GALLERY)

Sangetsu Goodrich Vietnam Co.,Ltd.
2nd Floor, Lant Building, No. 56-58-60 Hai Ba Trung Street,
Ben Nghe Ward, District 1, Ho Chi Minh City, Vietnam

T: +84 (0) 28 3520 2300 | F: +84 (0) 28 3520 2399
E: info@sangetsu-goodrich.vn

INDIA

MUMBAI (OFFICE & GALLERY)

Goodrich Global Furnishing India Pvt. Ltd.
5A/D Wing, Crystal Plaza, Opposite Infinity Mall
Andheri West 400053, India

T: (+91) 22 4264 5757 | F: (+91) 96 5038 5757
E: sumiaya.sharma@goodrichglobal.in

NEW DELHI (OFFICE & GALLERY)

Goodrich Global Furnishing India Pvt. Ltd.
804, 2nd Floor, Arjun Nagar, Kotla Mubarakpur,
Opp. Defence Colony, New Delhi - 110003, India

T: (Office): (+91) 11 4660 5757
T: (Gallery): (+91) 98 1106 0557 | F: (Gallery): (+91) 96 5087 6957
E: vincent.sandanadas@goodrichglobal.in

INDONESIA

JAKARTA (OFFICE)

Goodrich Suites Jakarta 2nd Floor
Jl. Pangeran Antasari No. 60, Cipete Utara,
Jakarta Selatan 12150, DKI Jakarta, Indonesia

T: (+62 21) 722 4345 | F: (+62 21) 724 6360
E: info@goodrichglobal.co.id

JAKARTA ANTASARI (GALLERY)

Goodrich Suites Jakarta 1st Floor,
Jl. Pangeran Antasari No. 60, Cipete Utara,
Jakarta Selatan 12150, DKI Jakarta, Indonesia

T: (+62 21) 725 5065
E: info@goodrichglobal.co.id

INDONESIA DESIGN DISTRICT PIK2 (GALLERY)

Jl. M. H. Thamrin T17, Salembaran.Kosambi,
Tangerang Regency, Banten 15214, Indonesia

T: (+62 21) 3970 9600
E: info@goodrichglobal.co.id

MALANG (OFFICE & GALLERY)

Terusan Dieng No. 39, Pisang Candi,
Sukun - Malang, Jawa Timur 65146, Indonesia

T: (+62 341) 563 500 | F: (+62 341) 562 141
E: info@goodrichglobal.co.id

SEMARANG (GALLERY)

Jl. Raung No.8, Gajahmungkur, Kec. Gajahmungkur,
Kota Semarang, Jawa Tengah 50232, Indonesia

T: (+62 24) 850 2063
E: info@goodrichglobal.co.id

SERPONG BSD (OFFICE & GALLERY)

Ruko Mendrisio 2B No. 26 - 27, Jl. Boulevard Illago
(BSD Raya Utama) BSD Serpong 15332,
Tangerang - Banten, Indonesia

T: (+62 21) 290 01036 / 40 | F: (+62 21) 290 01016
E: info@goodrichglobal.co.id

SURABAYA (GALLERY)

Jl. Jaksa Agung Supratno No.24
Ketabang, Surabaya,
Jawa Timur 60272, Indonesia

T: (+62 31) 992 60046 , (+62 31) 992 60739
E: info@goodrichglobal.co.id

UNITED ARAB EMIRATES

DUBAI (OFFICE & WAREHOUSE)

Goodrich Global Trading LLC
Unit 1-13 Plot 598-1149,
Warehouse No. 6, Dubai Investment Park 1,
P.O. Box 304, Dubai United Arab Emirates

T: (+971) 4889 5770 | F: (+971) 4889 5771
E: info@goodrichglobal.ae

CHINA

www.goodrichglobal.com.cn

BEIJING (OFFICE)

Sangetsu Goodrich China Co., Ltd.
Rm.2106, A Block North Tower SOHO Shang Du,
8 East Bridge Road, Chaoyang District,
Beijing 100020, China-PRC

T: (+8610) 5869 3577 | F: (+8610) 6569 6893

GUANGZHOU (OFFICE)

Sangetsu Goodrich China Co., Ltd
Room 1303, Tower B, Zhongtai International Square,
No.161, Linhe Xi Road, Tianhe District, Guangzhou,
Guangdong, 510610, China-PRC

T: (+8620) 3820 2933

SHANGHAI (OFFICE & GALLERY)

Sangetsu Goodrich China Co Ltd.
25F, 137 Lane, XianXia Road,
ShengGao International Tower, ChangNing Area,
Shanghai 200051, China-PRC

T: (+8621) 6486 8877 | F: (+8621) 6469 1116

WUJIANG (OFFICE)

Sangetsu Goodrich China Co Ltd.
No. 788 Panlong Road,
Wujiang Economic Development Zone,
Jiangsu Province 215200, China-PRC

T: (+86512) 8687 5757 | F: (+86512) 8687 1202

HONG KONG (CHINA)

www.goodrichglobal.com.hk

HONG KONG (OFFICE & GALLERY)

Goodrich Global Ltd.
Units 902-904, 9/F., Tower 1, Cheung Sha Wan Plaza,
833 Cheung Sha Wan Road, Kowloon, Hong Kong
(Lai Chi Kok MTR Exit A)

T: (+852) 2668 5757
E: info@goodrichglobal.com.hk

Stay Connected - www.goodrichglobal.com | info@goodrichglobal.com



/Goodrich.Global.Singapore



/goodrich_global



/GoodrichGlobal



/goodrichglobal



/GoodrichGlobal



/goodrichglobal



/GoodrichGlobalOfficial

SINGAPORE [HQ] | MALAYSIA | THAILAND | VIETNAM | INDIA | INDONESIA | UNITED ARAB EMIRATES | PHILIPPINES | CHINA | HONG KONG (CHINA)

*Global addresses are updated as of 12 June 2024. Scan the QR code on the top right for any updates.

Copyright © 2024 Goodrich Global. All rights reserved.