



Goodrich Global
SINCE 1983

PREMIERWALL
FUSION

2025-2028

Wallcovering
Fabric Backed
Vinyl Type II





PREMIERWALL FUSION LOW VOC

50 - 54" Fabric-Backed Contract Wallcovering

PHYSICAL PROPERTIES

Weight 20/21 oz. PLY
Roll Size 50/54" x 30yds
Backing Osnaburg

Meets or exceeds Federal Specification CCC-W-408D for Type II Wallcovering

FIRE SAFETY

- Class "A" Fire rated
- NFPA255 (UL723, CAN S102M) Tunnel Test1
- NFPA 286 Corner Burn Test2
- Meets requirements for Flame Spread, Smoke Developed and Flashover
- UL Labelled and Listed

ENVIRONMENT & HEALTH

- The product has been assessed according to the assessment criteria of the Singapore Green Building product certification scheme.
- Meets California section 01350 IAQ test requirements for wallcovering
- Can contribute to LEED EQ 4.1 point for low-emitting materials, adhesives, and sealants, if used with low VOC adhesives
- Can contribute to LEED MR 5.1 point for regional materials



ANTI-MICROBIAL FEATURES

PREMIERWALL FUSION contain mildew and staph resistant additives in the vinyl and plastisol. This provides the wallcovering with resistance to the growth of mildew and bacteria, including mold, fungi, pink stain and black fungal stain.

BATCHING

Since slight variation in shading may occur time to time, it is important that the roll carrying the same batch number be used in any one area.

ORIGIN

USA



MOONDUST

SPECIFICATIONS & PROPERTIES

WEIGHT

20 oz. PLY / 620G/PLM 13.3 oz.

WIDTH

54" (137cm)

BACKING

Osnaburg

PATTERN MATCH

Reverse Random

HORIZONTAL REPEAT

N.A.

VERTICAL REPEAT

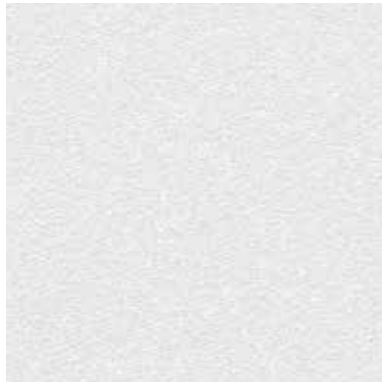
N.A.

Custom colors, weights, widths and microventing are available.

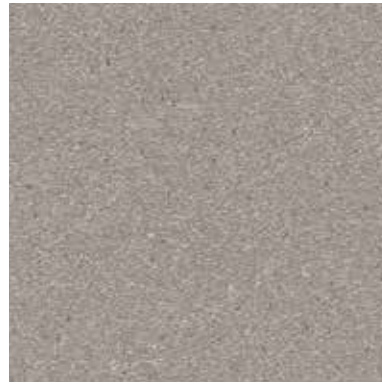
ENVIRONMENTAL & HEALTH

- Low VOC, California section 01350 IAQ
- 10% Recycled content
- Non-Phthalate
- EPD/HPD
- California Prop 65, no labeling required

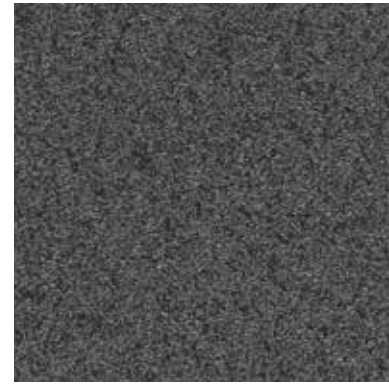




PF8101



PF8102



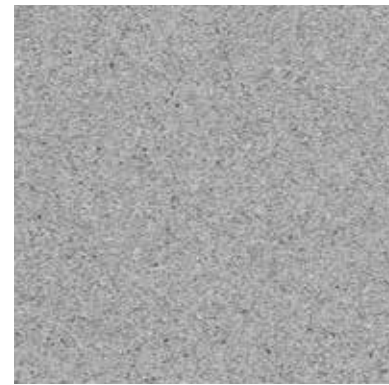
PF8103



PWF8104



PWF8105



PWF8106



PWF8107



PWF8108



PWF8109



Stock In Asia



Stock in USA

GRATEFUL DENIM

SPECIFICATIONS & PROPERTIES

WEIGHT

20 oz. PLY / 620G/PLM 13.3 oz.

WIDTH

54" (137cm)

BACKING

Osnaburg

PATTERN MATCH

Reverse Random

HORIZONTAL REPEAT

N.A.

VERTICAL REPEAT

N.A.

Custom colors, weights, widths and microventing are available.

ENVIRONMENTAL & HEALTH

- 10% recycled content (varied blend of pre-consumer and remanufactured material)
- Certified to NSF/ANSI 342 Sustainability Assessment: ask distributor for details
- Meets California Section 01350 IAQ test requirements for wallcovering
- Complies with USGBC LEED v4 Criteria, under Indoor Environmental Quality (CDPH/EHLB/Standard Method Version 1.1, 2010)





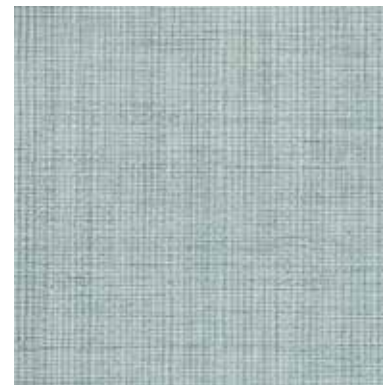
PF8110



PF8111



PF8112



PWF8113



PWF8114



PWF8115



PWF8116



PWF8117



PWF8118



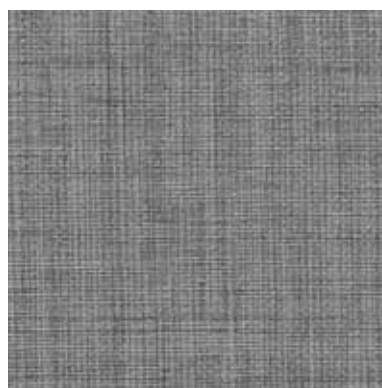
PWF8119



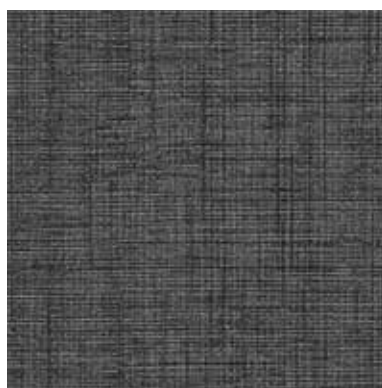
PWF8120



PWF8121



PWF8122



PWF8123



PWF8124



PWF8125



Stock In Asia

Stock in USA

PARIS SILK

SPECIFICATIONS & PROPERTIES

WEIGHT

20 oz. PLY / 620G/PLM 13.3 oz.

WIDTH

52" (132cm)

BACKING

Osnaburg

PATTERN MATCH

Reverse Random

HORIZONTAL REPEAT

N.A.

VERTICAL REPEAT

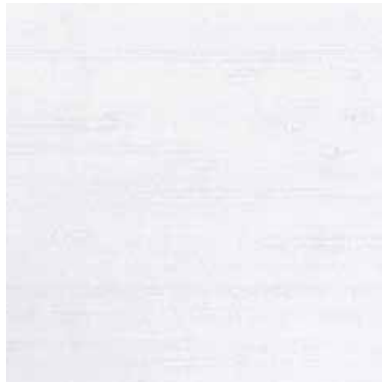
N.A.

Custom colors, weights, widths and microventing are available.

ENVIRONMENTAL & HEALTH

- Low VOC, California section 01350 IAQ
- 10% Recycled content
- Non-Phthalate
- EPD/HPD
- California Prop 65, no labeling required





PF8126



PF8127



PWF8128



PWF8129



PWF8130



PWF8131



PWF8132



PWF8133



Stock In Asia



Stock in USA

PARIS SILK NIGHTS

SPECIFICATIONS & PROPERTIES

WEIGHT

20 oz. PLY / 620G/PLM 13.3 oz.

WIDTH

52" (132cm)

BACKING

Osnaburg

PATTERN MATCH

Reverse Random

HORIZONTAL REPEAT

N.A.

VERTICAL REPEAT

N.A.

Custom colors, weights, widths and microventing are available.

ENVIRONMENTAL & HEALTH

- LowVOC, California section 01350 IAQ
- 10% Recycled content
- Non-Phthalate
- EPD/HPD
- California Prop 65, no labeling required





PF8134



PF8135



PWF8136



PWF8137



PWF8138



PWF8139



PWF8140



PWF8141



PWF8142



PWF8143



PWF8144



PWF8145



PWF8146



PWF8147



PWF8148



PWF8149



Stock In Asia



Stock in USA

CANYON CLAY

SPECIFICATIONS & PROPERTIES

WEIGHT

20 oz. PLY / 620G/PLM 13.3 oz.

WIDTH

54" (137cm)

BACKING

Osnaburg

PATTERN MATCH

Reverse Random

HORIZONTAL REPEAT

N.A.

VERTICAL REPEAT

N.A.

Custom colors, weights, widths and microventing are available.

ENVIRONMENTAL & HEALTH

- LowVOC, California section 01350 IAQ
- 10% Recycled content
- Non-Phthalate
- EPD/HPD
- California Prop 65, no labeling required





PF8150



PF8151



PF8152



PWF8153



PWF8154



PWF8155



PWF8156



PWF8157



PWF8158



Stock In Asia



Stock in USA

WOODWINDS

SPECIFICATIONS & PROPERTIES

WEIGHT

20 oz. PLY / 620G/PLM 13.3 oz.

WIDTH

54" (137cm)

BACKING

Osnaburg

PATTERN MATCH

Straight Random

HORIZONTAL REPEAT

N.A.

VERTICAL REPEAT

N.A.

Custom colors, weights, widths and microventing are available.

ENVIRONMENTAL & HEALTH

- Low VOC, California section 01350 IAQ
- 10% Recycled content
- Non-Phthalate
- EPD/HPD
- California Prop 65, no labeling required





PF8159



PF8160



PF8161



PWF8162



PWF8163



PWF8164



PWF8165



PWF8166



PWF8167



PWF8168



PWF8169



PWF8170



PWF8171



PWF8172



PWF8173



PWF8174



Stock In Asia



Stock in USA

YOGA STUDIO

TEAHOUSE WEAVE

SPECIFICATIONS & PROPERTIES

WEIGHT

20 oz. PLY / 620G/PLM 13.3 oz.

WIDTH

54" (137cm)

BACKING

Osnaburg

PATTERN MATCH

Reverse Random

HORIZONTAL REPEAT

N.A.

VERTICAL REPEAT

N.A.

Custom colors, weights, widths and microventing are available.

ENVIRONMENTAL & HEALTH

- Low VOC, California section 01350 IAQ
- 10% Recycled content
- Non-Phthalate
- EPD/HPD
- California Prop 65, no labeling required





PF8175



PF8176



PF8177



PF8178



PWF8179



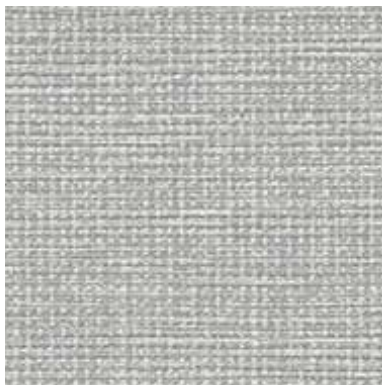
PWF8180



PWF8181



PWF8182



PWF8183



PWF8184



PWF8185



PWF8186



PWF8187



PWF8188



PWF8189



PWF8190



Stock In Asia



Stock in USA

RESORT RAFFIA

SPECIFICATIONS & PROPERTIES

WEIGHT

20 oz. PLY / 620G/PLM 13.3 oz.

WIDTH

54" (137cm)

BACKING

Osnaburg

PATTERN MATCH

Reverse Random

HORIZONTAL REPEAT

N.A.

VERTICAL REPEAT

N.A.

Custom colors, weights, widths and microventing are available.

ENVIRONMENTAL & HEALTH

- LowVOC, California section 01350 IAQ
- 10% Recycled content
- Non-Phthalate
- EPD/HPO
- California Prop 65, no labeling required





PF8191



PF8192



PWF8193



PWF8194



PWF8195



PWF8196



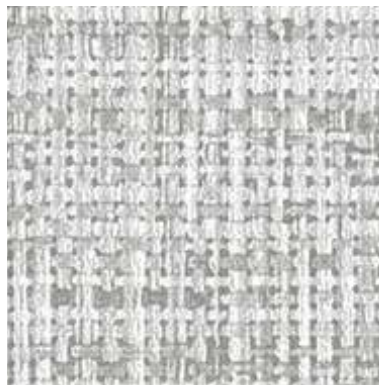
PWF8197



PWF8198



PWF8199



PWF8200



PWF8201



PWF8202



PWF8203



PWF8204



PWF8205



PWF8206



Stock In Asia



Stock in USA

HERRINGBONE

SPECIFICATIONS & PROPERTIES

WEIGHT

20 oz. PLY / 620G/PLM 13.3 oz.

WIDTH

54" (137cm)

BACKING

Osnaburg

PATTERN MATCH

Reverse Random

HORIZONTAL REPEAT

N.A.

VERTICAL REPEAT

N.A.

Custom colors, weights, widths and microventing are available.

ENVIRONMENTAL & HEALTH

- 10% recycled content (varied blend of pre-consumer and remanufactured material)
- Certified to NSF/ANSI 342 Sustainability Assessment: ask distributor for details
- Meets California Section 01350 IAQ test requirements for wallcovering
- Complies with USGBC LEED v4 Criteria, under Indoor Environmental Quality (CDPH/EHLB/Standard Method Version 1.1, 2010)





PF8207



PF8208



PF8209



PWF8210



PWF8211



PWF8212



PWF8213



PWF8214



PWF8215



PWF8216



PWF8217



PWF8218



PWF8219



PWF8220



PWF8221



PWF8222



Stock In Asia



Stock in USA

WATERCOLOR CANVAS

SPECIFICATIONS & PROPERTIES

WEIGHT

20 oz. PLY / 620G/PLM 13.3 oz.

WIDTH

54" (137cm)

BACKING

Osnaburg

PATTERN MATCH

Reverse Random

HORIZONTAL REPEAT

N.A.

VERTICAL REPEAT

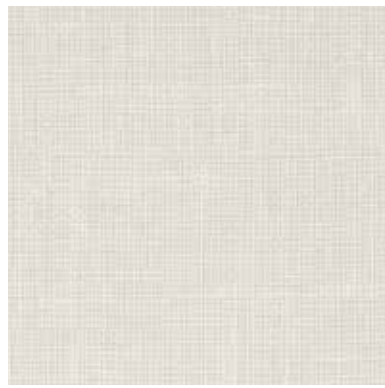
N.A.

Custom colors, weights, widths and microventing are available.

ENVIRONMENTAL & HEALTH

- 10% recycled content (varied blend of pre-consumer and remanufactured material)
- Certified to NSF/ANSI 342 Sustainability Assessment: ask distributor for details
- Meets California Section 01350 IAQ test requirements for wallcovering
- Complies with USGBC LEED v4 Criteria, under Indoor Environmental Quality (CDPH/EHLB/Standard Method Version 1.1, 2010)





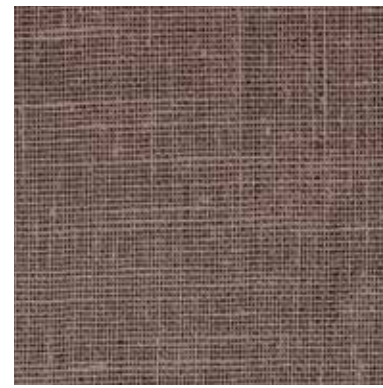
PF8223



PF8224



PF8225



PWF8226



PWF8227



PWF8228



PWF8229



PWF8230



PWF8231



PWF8232



PWF8233



PWF8234



PWF8235



PWF8236



PWF8237



PWF8238



Stock In Asia



Stock in USA

LEVELS

SPECIFICATIONS & PROPERTIES

WEIGHT

20 oz. PLY / 620G/PLM 13.3 oz.

WIDTH

54" (137cm)

BACKING

Osnaburg

PATTERN MATCH

Reverse Random

HORIZONTAL REPEAT

N.A.

VERTICAL REPEAT

N.A.

Custom colors, weights, widths and microventing are available.

ENVIRONMENTAL & HEALTH

- 10% recycled content (varied blend of pre-consumer and remanufactured material)
- Certified to NSF/ANSI 342 Sustainability Assessment: ask distributor for details
- Meets California Section 01350 IAQ test requirements for wallcovering
- Complies with USGBC LEED v4 Criteria, under Indoor Environmental Quality (CDPH/EHLB/Standard Method Version 1.1, 2010)

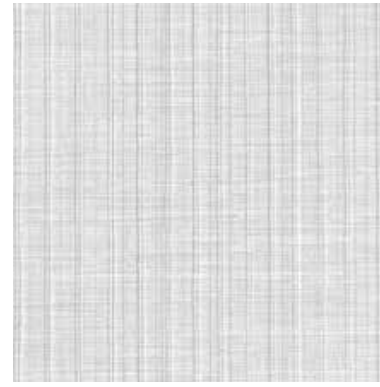




PF8239



PF8240



PF8241



PWF8242



PWF8243



PWF8244



PWF8245



PWF8246



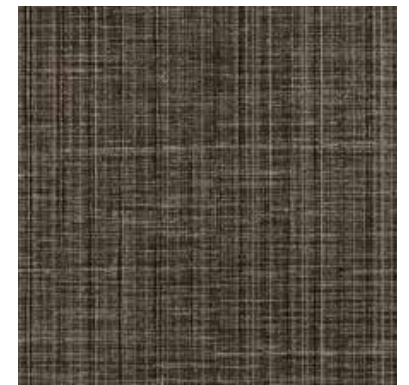
PWF8247



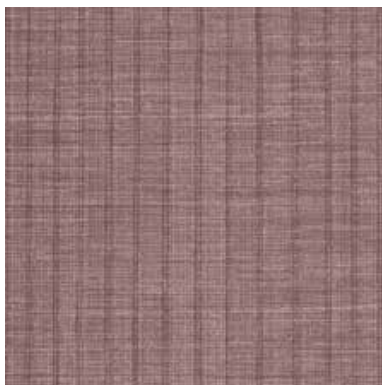
PWF8248



PWF8249



PWF8250



PWF8251



PWF8252



PWF8253



PWF8254



Stock In Asia



Stock in USA

REFLECTION

SPECIFICATIONS & PROPERTIES

WEIGHT

20 oz. PLY / 620G/PLM 13.3 oz.

WIDTH

54" (137cm)

BACKING

Osnaburg

PATTERN MATCH

Reverse Random

HORIZONTAL REPEAT

N.A.

VERTICAL REPEAT

N.A.

Custom colors, weights, widths and microventing are available.

ENVIRONMENTAL & HEALTH

- 10% recycled content (varied blend of pre-consumer and remanufactured material)
- Certified to NSF/ANSI 342 Sustainability Assessment: ask distributor for details
- Meets California Section 01350 IAQ test requirements for wallcovering
- Complies with USGBC LEED v4 Criteria, under Indoor Environmental Quality (CDPH/EHLB/Standard Method Version 1.1, 2010)

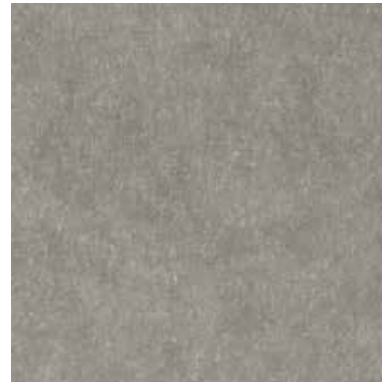




PF8255



PF8256



PF8257



PF8258



PWF8259



PWF8260



PWF8261



PWF8262



PWF8263



PWF8264



PWF8265



PWF8266



PWF8267



PWF8268



PWF8269



PWF8270



Stock In Asia



Stock in USA

REFLECTION

PREMIERWALL FUSION INDEX

Page	Pattern No	Pattern Name	Weight (oz)	Pattern Repeat (In)		Pattern Match	Backing	Roll Size
				Horizontal	Vertical			
2 - 3	PF8101 - PWF8109	MOONDUST	20OZ	0	0	Reverse Random	Osnaburg	54" x 30yds
4 - 5	PF8110 - PWF8125	GRATEFUL DENIM	20OZ	0	0	Reverse Random	Osnaburg	54" x 30yds
6 - 7	PF8126 - PWF8133	PARIS SILK	20OZ	0	0	Reverse Random	Osnaburg	52" x 30yds
8 - 9	PF8134 - PWF8149	PARIS SILK NIGHTS	20OZ	0	0	Reverse Random	Osnaburg	52" x 30yds
10 - 11	PF8150 - PWF8158	CANYON CLAY	20OZ	0	0	Reverse Random	Osnaburg	54" x 30yds
12 - 13	PF8159 - PWF8174	WOODWINDS	20OZ	0	0	Straight Random	Osnaburg	54" x 30yds
14 - 15	PF8175 - PWF8190	TEAHOUSE WEAVE	20OZ	0	0	Reverse Random	Osnaburg	54" x 30yds
16 - 17	PF8191 - PWF8206	RESORT RAFFIA	20OZ	0	0	Reverse Random	Osnaburg	54" x 30yds
18 - 19	PF8207 - PWF8222	HERRINGBONE	20OZ	0	0	Reverse Random	Osnaburg	54" x 30yds
20 - 21	PF8223 - PWF8238	WATERCOLOR CANVAS	20OZ	0	0	Reverse Random	Osnaburg	54" x 30yds
22 - 23	PF8239 - PWF8254	LEVELS	20OZ	0	0	Reverse Random	Osnaburg	54" x 30yds
24 - 25	PF8255 - PWF8270	REFLECTION	20OZ	0	0	Reverse Random	Osnaburg	54" x 30yds

Installation and Maintenance Guidelines

BEFORE YOU BEGIN

Examine the material carefully to ensure that the pattern, colour, and quality are satisfactory and as ordered. Check that the quantity and dimensions match the required specifications, prior to cutting. In the event that any discrepancies are found, STOP and contact Goodrich Global before proceeding.

We recommend that the wall moisture content does not exceed 4% using a reputable moisture meter, and that active moisture infiltration, condensation, and/or accumulation - particularly in warm, humid climates - is not present. If walls show mould, mildew or visible moisture damage, or if moisture content exceeds recommendations, do not proceed with installation until the condition has been fully corrected under the direction of a qualified professional. Goodrich Global will not be responsible for any performance or quality issues if moisture problems are not addressed before or following installation.

HANGING GUIDELINES

Wallcovering rolls are numbered consecutively and should be cut and installed in reverse sequence, starting with the highest numbered roll. All strips should be hung in sequence as they are cut from the roll, using full widths of material, whenever possible. Install the wallcovering under permanent lighting conditions to evaluate colour and texture uniformity.

When hanging non-reversible or matching patterns, measure the wall height, allowing for pattern match, add 4", and table trim using a straight edge to ensure alignment across seams. Large, dominant pattern repeats require more careful planning as far as starting point, ceiling line, chair rails, door/window headers, etc. Patterns are meant to match at eye level and may run off slightly at the top and bottom of the wall. When hanging textured or random-match patterns, reverse hang alternate strips for a more uniform appearance; overlap and double cut, being careful not to score the wall. If the pattern effect is not acceptable after three strips are hung, re-hang strip #2 without reversing.

If any defect, colour variation, or unacceptable pattern effect is noticeable after three panels are cut and hung, STOP and contact Goodrich Global immediately. Goodrich Global cannot accept any claims on labour or material after more than three lengths have been installed.

ADHESIVE APPLICATION

Apply a uniform coat of a premixed vinyl wallcovering adhesive to the back of the material using a short-napped paint roller or stiff bristle brush (a pasting machine can be used at the installer's discretion). Goodrich WA202 adhesive is recommended for heavyweight vinyl wallcovering. Fold each sheet over and allow up to 10 minutes booking time for the adhesive to penetrate the backing of the lightweight vinyl material (up to 15 minutes for heavyweight vinyl), and to avoid paste drying at the edges.

Goodrich WA202 Wallcovering Adhesive :

- Specially formulated for all types of contract wallcoverings
- Non Hazardous, Non Toxic, Non Flammable, Non-Staining
- Solvent Free and Formaldehyde Free
- VOC is 0.45mg/kg
- Made in England



Complies to :

- ♥ Regulation (EC No 1907/2006)
- ♥ CLP European Regulation (EC) No 1272/2008
- ♥ BS3046/1981



INSTALLATION

Hang the first strip to a plumb line, overlapping the ceiling and baseboard, within 12 minutes of paste application. Use a stiff bristle brush to ensure that the wallcovering makes contact with the wall. A plastic smoother can also be used on non-metallic Vinyls, providing only light pressure is applied (do not use sharp-edged tools). Smooth from the middle to the outside edges, being careful not to stretch the material, and work out all air bubbles. Trim at the ceiling and baseboard with a sharp razor blade. For matched patterns, butt the second strip to the edge of the first and smooth out firmly. When double cutting non-matching patterns, place a 2-3" wide strip behind the seam to avoid scoring the wall. Flatten seams exerting light pressure with a seam roller. Low-adhesive painter's tape can be used to keep the face of the seams clean. Before applying the next strip, trim the top and bottom as with the first panel, and proceed in the same manner around the room.

Avoid cutting narrow widths of material for placement above doors and below windows. Vertical joints should not occur less than six inches from inside or outside corners. When trimming at chair rails and ceilings, always use a broad knife rather than a straight edge. Take extra care in keeping the adhesive off the face of the wallcovering.

Remove excess adhesive immediately with a natural sponge, frequently rinsed in clear, warm water, and dry with a soft, lint free cloth. After installation, the walls and wallcovering should be monitored for potential moisture or vapour infiltration, which must be promptly eliminated.

MAINTENANCE

Most wallcovering is easily cleaned using clear, warm water and mild soap with a natural sponge. A soft cloth or towel should only be used to tamp dry (do not rub). Stubborn stains can be removed with a laundry spot remover or rubbing alcohol. Do not use solvent-based cleaning agents, lacquer thinners, nail polish remover, pine oil, or cleaning agents containing bleach, which may cause discoloration over time.

Note: The above is intended only as a guideline. Wallcovering installations must conform to current hanging instructions included with each shipment. The installer has final responsibility for proper installation and evaluation of jobsite conditions.

PREMIERWALL
FUSION
2025-2028

Stay Connected - www.goodrichglobal.com | info@goodrichglobal.com

 /Goodrich.Global.Singapore  /goodrich_global  /GoodrichGlobal  /goodrichglobal
 /GoodrichGlobal  /goodrichglobal  /GoodrichGlobalOfficial

SINGAPORE (HQ) | CHINA | HONG KONG (CHINA) | INDIA | INDONESIA | MALAYSIA | MYANMAR | PHILIPPINES | THAILAND | UNITED ARAB EMIRATES | VIETNAM

Copyright © 2025 Goodrich Global. All rights reserved.