

ECOFLOOR

COSMOS | BIOSPHERE | HABITAT

2024 - 2027





INTERWOVEN UNIVERSE

Exploring Biosphere, Habitat, and Cosmos

Welcome to "Interwoven Universe," a captivating collection that delves into the intricate connections between the biosphere, habitats, and the cosmos.

Through a series of artistic expressions and scientific explorations, this collection invites you to journey through designs depicting the interconnected tapestry of life on Earth and the vast expanse of the universe beyond.

"Interwoven Universe" concludes with a reflection on the profound connections that unite the biosphere, habitats, and the cosmos. Through art and science, this collection underscores the interdependence of life on Earth and the broader universe, inspiring a deeper appreciation for the delicate balance that sustains us all. As we continue to explore and protect these interconnected realms, may we cherish and steward our planet and its cosmic surroundings with reverence and wonder.

www.goodrichglobal.com



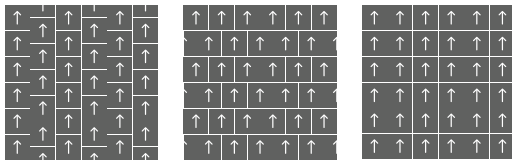
Technical Specification



Collection Name	Cosmos Biosphere Habitat
Yarn	PolyLux Synthetic Fibre
Construction	Multi Level Loop
Dyed Method	Solution Dyed
Gauge	1/10 inch
Stitches Per Inch	10 per inch
Pile Weight	24 oz/sy (816 gm/sm)
Total Weight	143 oz/sy (4868 gm/sm +/- 300 gm/sm)
Pile Height	4.0 mm (+/-0.5 mm)

Total Height	8.0 mm (+/-0.5 mm)
Primary Backing	Non-woven
Secondary Backing	Polyolefin Bac PRO
Packing	20 pcs(5 sm/box)
Colorfastness	Grade 5 - No Change (AATCC 16)
Flammability	Class I (ASTM E648)
Smoke Density	Passed (ASTM E662)
Static Propensity	≤3.5 kV (AATCC-134)
SGBC	Very Good
Declare Label	Declare Certified

Installation Methods:



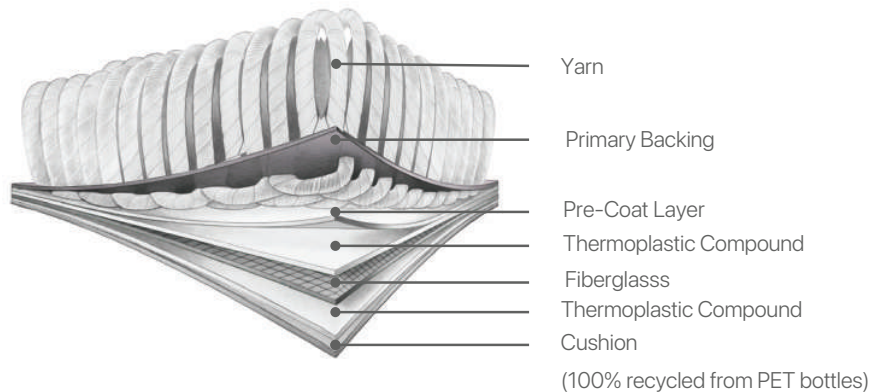
Ashlar Brick Monolithic

- * Specifications are based on average normal manufacturing tolerances, variations do not affect product performance. As with all quality carpets, slight variations in colors may occur from dye lot to dye lot.
- * Protective chair pads are recommended under office chairs with roller castors to preserve appearance retention and to avoid excessive wear.
- * As with all dyed products, colors are subject to dye lot variations.

Polyolefin Bac Pro

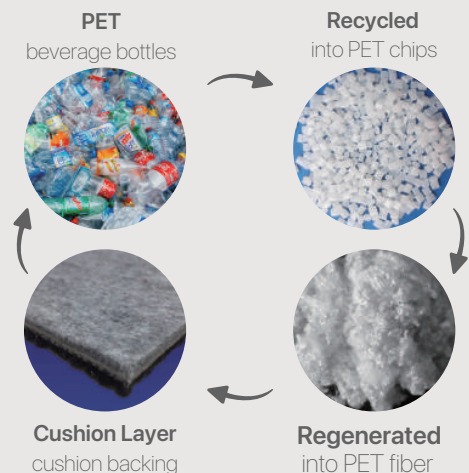
Carpet Tile Backing

Polyolefin Bac Pro takes your spaces to a higher standard of sustainability to support greater wellness for people and planet. The Polyolefin Bac Pro carpet tile contains recycled content, helping to eliminate the plastic waste stream. It offers superior performance and sustainability to the carpets.



ADVANTAGES :

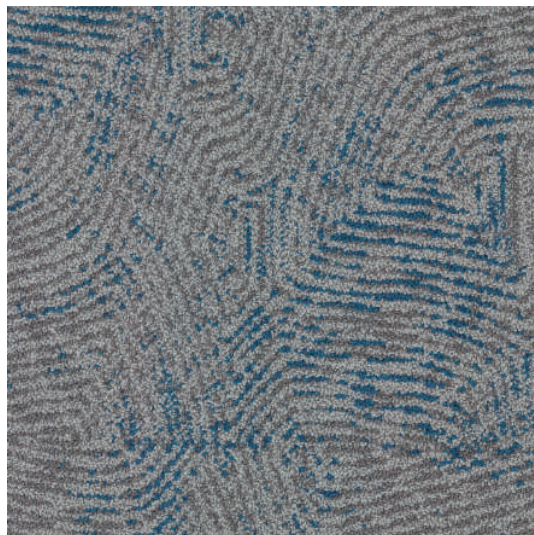
- More comfortable underfoot, reducing fatigue.
- Sound reduction and absorption
- Provides dimensional stability
- Hydrophobic cushion backing
- Contains no plasticizers, no PVC, no bitumen
- Cushion is made of 100% recycled PET bottles
- Contribute to or comply with LEED® v4, Living Building Challenge and the WELL Building Standard
- CRI Green Label Plus certified and Carbon Footprint certified
- Lighter than traditional carpet tile equals cost saving in shipping



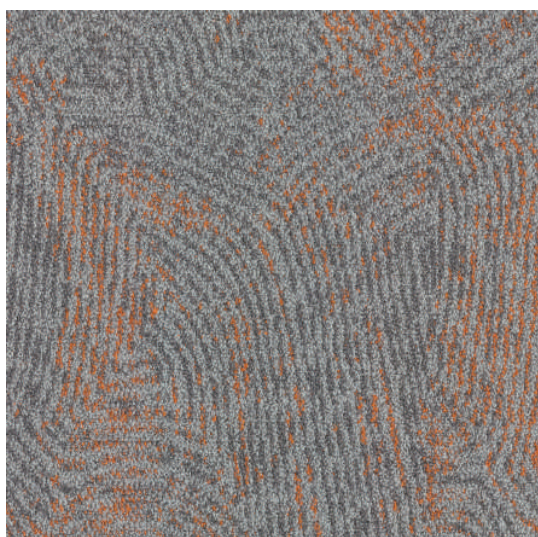
Cosmos (50 X 50 cm)



CM300 Stone



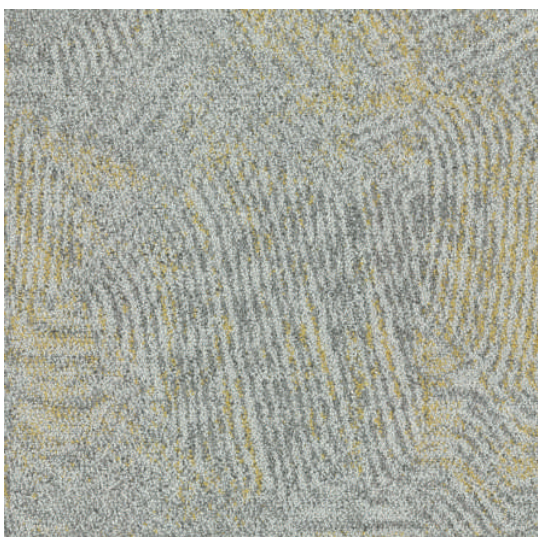
CM302 Peninsula



CM304 Rust



CM400 Concrete

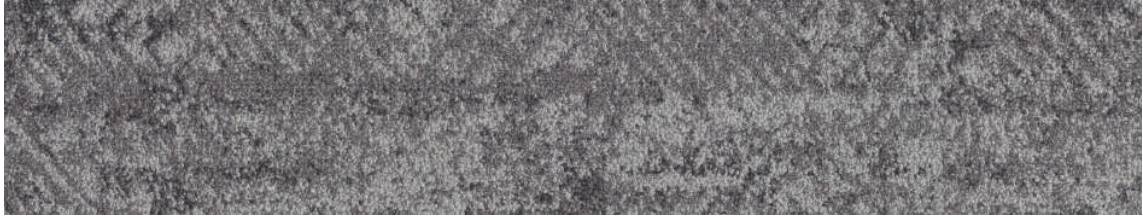


CM403 Lemon

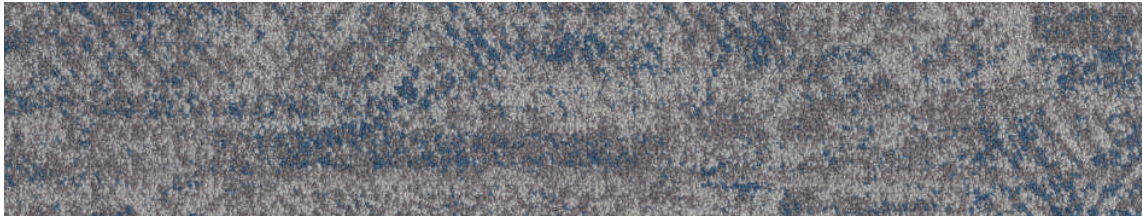


CM405 Fern

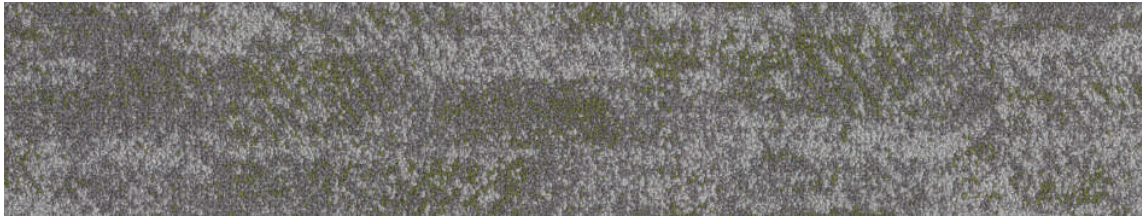
Biosphere (25 X 100 cm)



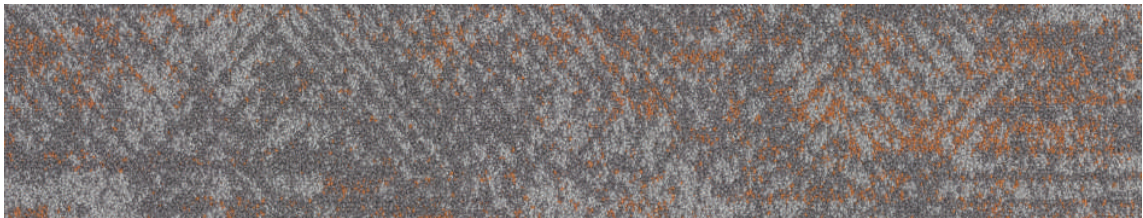
BIO301 Dusk



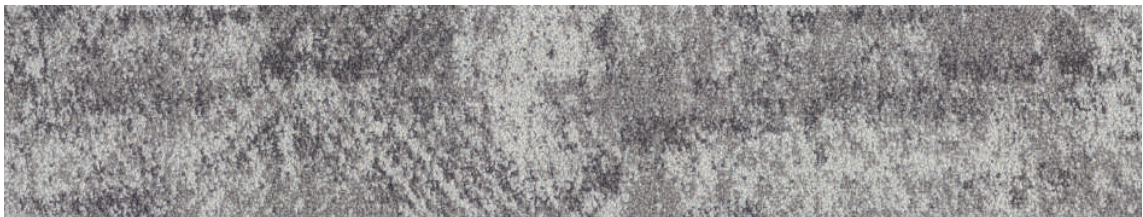
BIO302 Peninsula



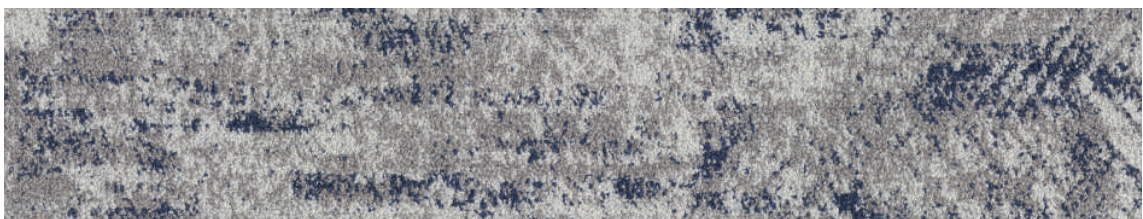
BIO303 Moss



BIO304 Autumn

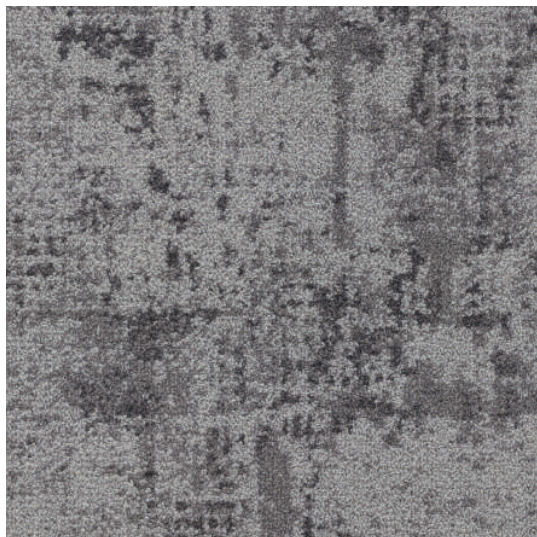


BIO401 Sterling

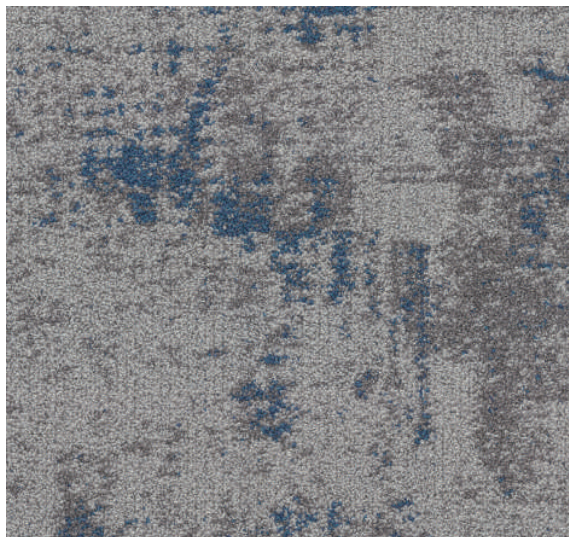


BIO402 Fountain

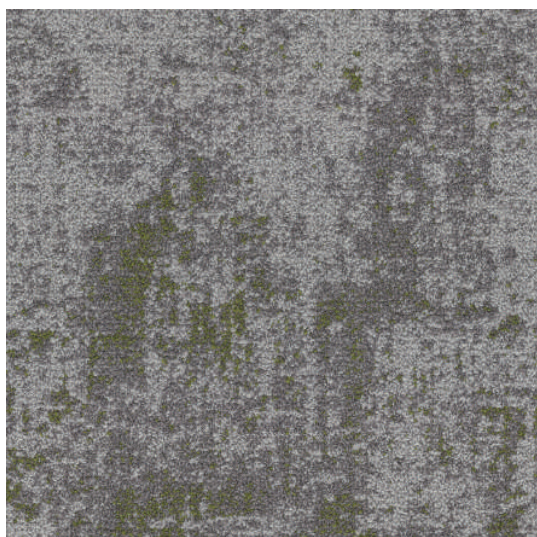
Habitat (50 X 50 cm)



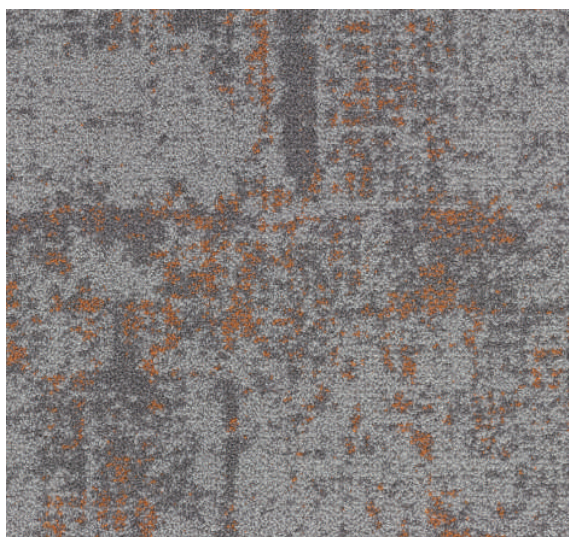
HAB301 Dusk



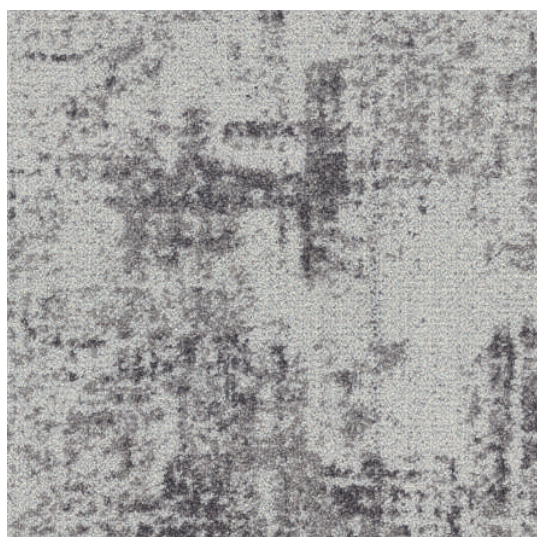
HAB302 Peninsula



HAB303 Moss



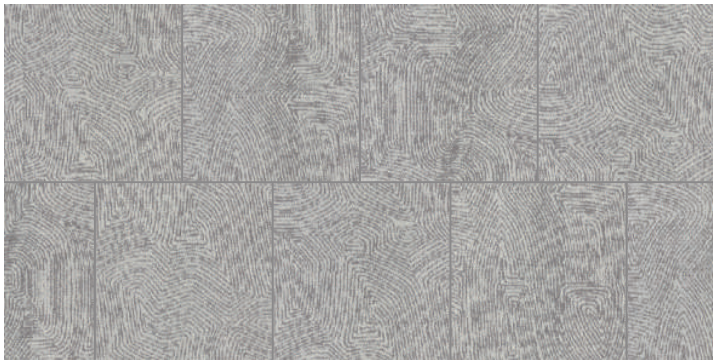
HAB304 Autumn



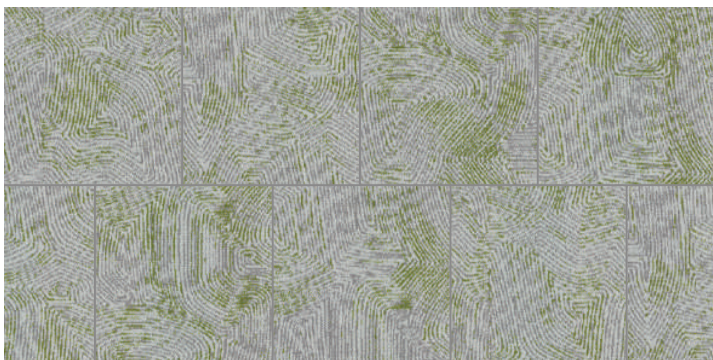
HAB401 Sterling



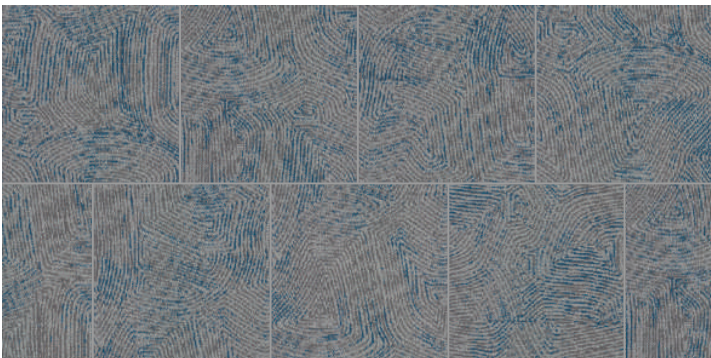
HAB402 Fountain



Collection Cosmos
Item Name CM400 Concrete

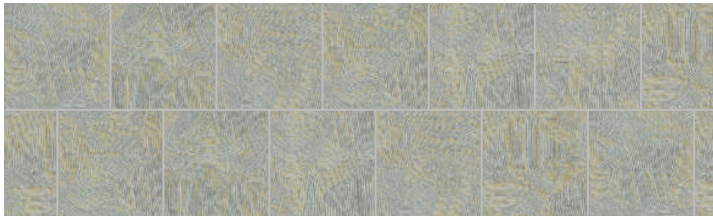


Collection Cosmos
Item Name CM405 Fern

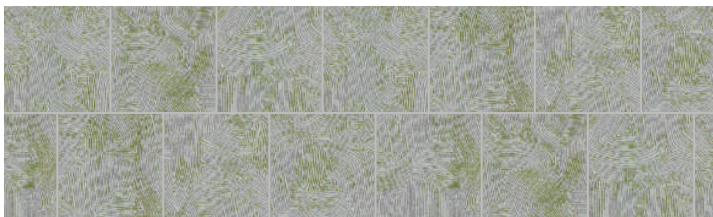


Collection
Item Name

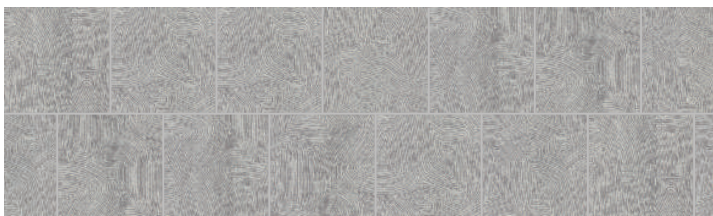
Cosmos
CM302 Peninsula



Collection Cosmos
Item Name CM403 Lemon



Collection Cosmos
Item Name CM405 Fern



Collection Cosmos
Item Name CM400 Concrete



Monolithic

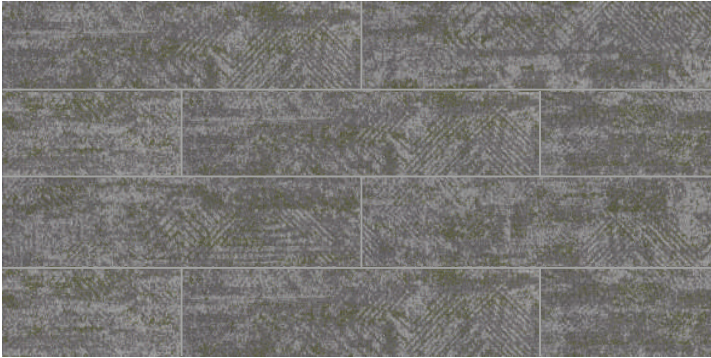


Collection
Item Name

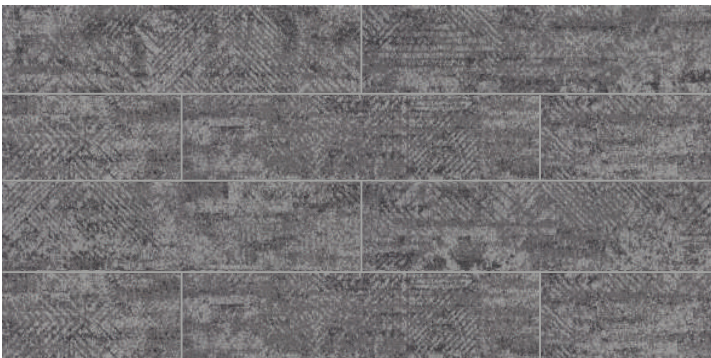
Biosphere
BIO401 Sterling



Ashlar



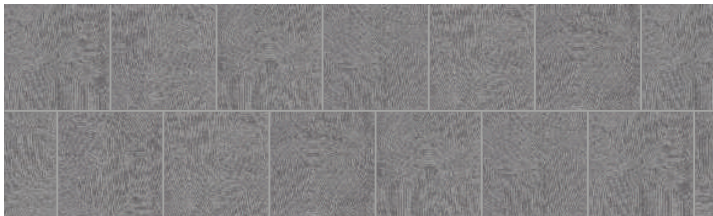
Collection Biosphere
Item Name BIO303 Moss



Collection Biosphere
Item Name BIO301 Dusk



Random Monolithic



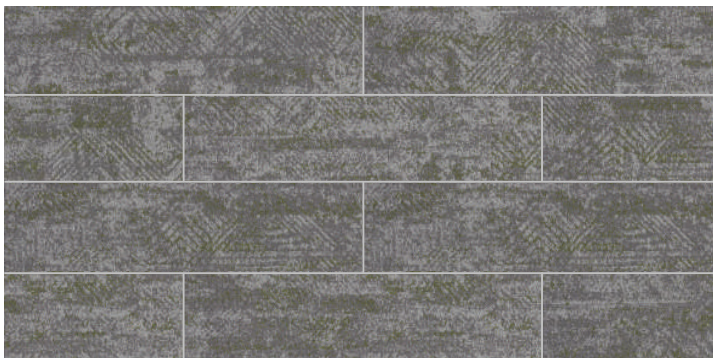
Collection Cosmos
Item Name CM300 Stone



Collection Biosphere
Item Name BIO304 Autumn

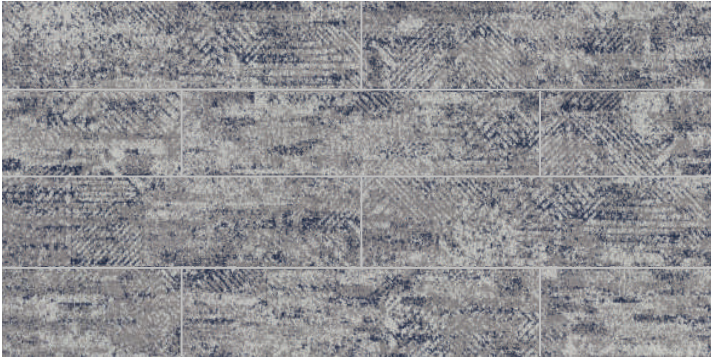


Collection Biosphere
Item Name BIO302 Peninsula



Collection
Item Name

Biosphere
BIO303 Moss



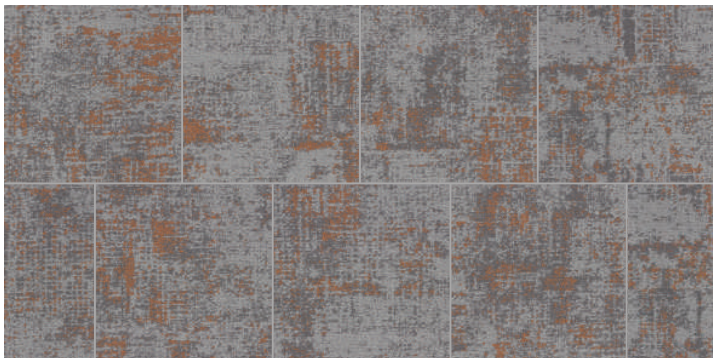
Collection Biosphere
Item Name BIO402 Fountain



Collection Biosphere
Item Name BIO401 Sterling



Monolithic

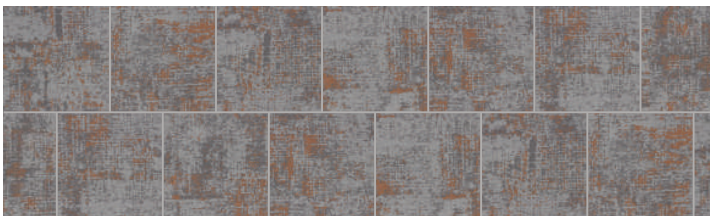


Collection
Item Name

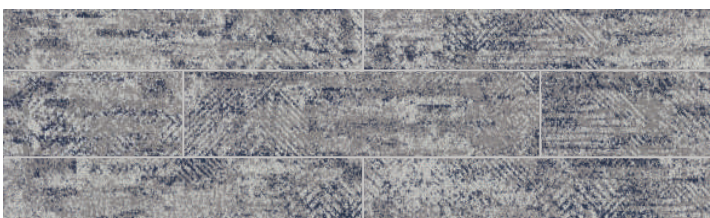
Habitat
HAB304 Autumn



Collection Habitat
Item Name HAB301 Dusk



Collection Habitat
Item Name HAB304 Autumn



Collection Biosphere
Item Name BIO402 Fountain



Collection
Item Name

Habitat
HAB301 Dusk



Monolithic



Collection Habitat
Item Name HAB401 Sterling



Collection Habitat
Item Name HAB402 Fountain



Collection Habitat
Item Name HAB302 Peninsula



Collection Habitat
Item Name HAB304 Autumn



Collection Habitat
Item Name HAB303 Moss

Goodrich



Stay Connected

www.goodrichglobal.com | info@goodrichglobal.com

 [/goodrich_global](https://www.instagram.com/goodrich_global)

 [/goodrichglobal](https://www.pinterest.com/goodrichglobal)

 [/Goodrich.Global.Singapore](https://www.facebook.com/Goodrich.Global.Singapore)

 [/Goodrich.Global](https://www.linkedin.com/company/Goodrich.Global)

 [/goodrichglobal](https://www.youtube.com/goodrichglobal)

 [/GoodrichGlobalOfficial](https://www.tiktok.com/GoodrichGlobalOfficial)