

GOODRICH FLOORING

2024



ABOUT GOODRICH



Goodrich Global is Asia's leading supplier of wallcoverings, fabrics, carpets and flooring materials.

We are involved in virtually every aspect of the soft furnishing as well as the flooring industry, from production, sourcing, and distributing to marketing, branding and retailing. Our investment in branding creates value in our market developments achieving customer satisfaction.

Goodrich is currently located in Singapore, China, Hong Kong (China), India, Indonesia, Malaysia, Myanmar, Philippines, Thailand, United Arab Emirates & Vietnam.

With the largest service and installation team in the region, we work closely with the design firms and have particular expertise in providing wallcoverings, soft furnishings and flooring products for the following type of facilities.

- Hospitality Industry
- Health Care Facilities
- Commercial and Retail Buildings
- Educational Institutions
- Places of Interest
- Religious Buildings
- Residential Projects

Our Product Range is diverse and creative with an unlimited choice of colours, patterns and textures.

INDEX

■ Introduction to Vinyl Sheet	1
Medintech Plus	4
Starlux	7
Medintone	9
Pastell	12
■ Introduction to Luxury Vinyl Tiles (LVT)	15
GEFF Novaclick	18
GEFF Nova Dryback	20
Orchid 3000	22
Loom+	24
■ Introduction to Homogeneous Reconstituted Timber	25
Onewood Decking	28

INTRODUCTION VINYL SHEET

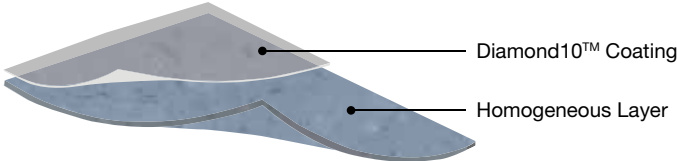
What is Vinyl Sheet?

Homogeneous vinyl floor coverings are made of one single layer that offers vibrancy and depth of the colour.

Compared with other flooring materials, homogeneous vinyl flooring are affordable solutions and are incredibly stain resistant. These benefits make these types of vinyl flooring a great choice for heavy traffic areas.

Coated with their latest technology, Diamond10™, Goodrich's vinyl sheet offers a wide range of vinyl sheet flooring that is tough as diamond, easy to clean, more durable and chemical resistant.

Thanks to its sterile and aseptic characteristics, Goodrich's vinyl sheet are designed to excel in medical environments as well as other high-traffic commercial areas where cleanliness, durability, and maintenance are major focuses.

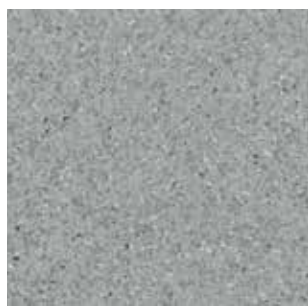




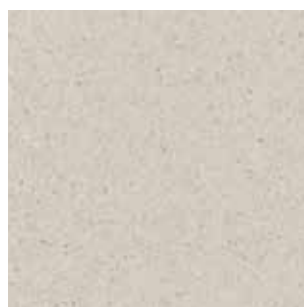




K811A-004
ROCK



K811A-003
SMOKE



K811A-106
FREESIA PEARL



K811A-524
MOSS



K811A-533
TURQUOISE



K811A-214
LIGHT BEIGE



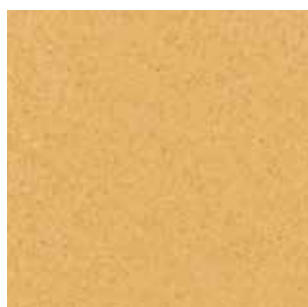
K811A-211
OATMEAL



K811A-002
SILVER GREY



K811A-212
CARTHAMUS CHAMPAGNE



K811A-331
BANANA

TECHNICAL SPECIFICATIONS

COATING

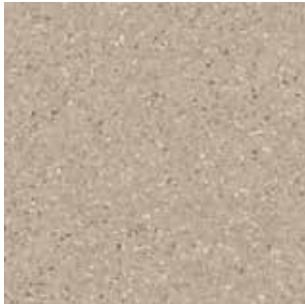
CLASSIFICATION	EN 685	CLASS	DIAMOND 10 COMMERCIAL: 34 INDUSTRIAL: 43
ROLL WIDTH	EN 426	M	2
ROLL LENGTH	EN 426	M	15-20
OVERALL THICKNESS	EN 428	MM	2
DIMENSIONAL STABILITY	EN 434		X: <0.4%; Y: <0.4%
FIRE RESISTANCE/FLAMMABILITY	EN 13501-1	CLASS	Bff-s1
SLIP RESISTANCE	DIN 51130	GROUP	R9
TVOC EMISSIONS	ISO 16000-6		Release in 28 days <5 µg/m ³
RESIDUAL INDENTATION	EN 433	MM	0.03
WEAR RESISTANCE	EN 649	GROUP	T
COLORFASTNESS	ISO 105-B02	RATING	≥6
STATIC ELECTRICAL PROPENSITY	EN 1815	KV	≤2.0
STAIN RESISTANCE	EN 423		NO STAIN 0
BACTERIA RESISTANCE	ISO 846: PART C		NO OBSERVED GROWTH



K811A-001
IXIA



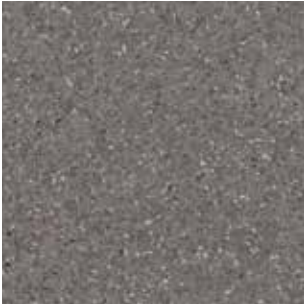
K811A-005
CLOUD



K811A-107
DESERT GOLD



K811A-108
PUMICE STONE



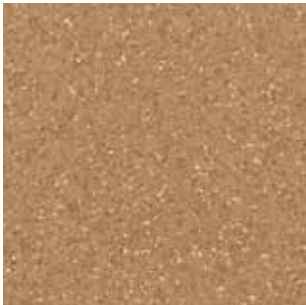
K811A-109
PURPLE ORE



K811A-210
ALMOND



K811A-213
GOLDEN GLOW



K811A-215
SANDALWOOD



K811A-216
LEMON



K811A-316
CREAM



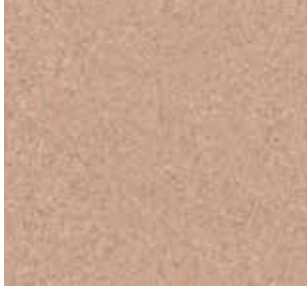
K811A-317
ORANGE



K811A-318
ORANGE ZEST



K811A-419
PEARL



K811A-420
CINNAMON



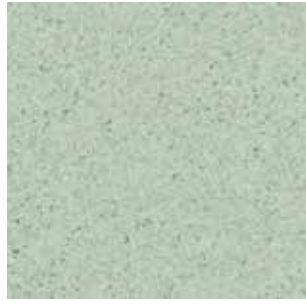
K811A-421
CORAL



K811A-422
MONARCH RED



K811A-435
ROUGE



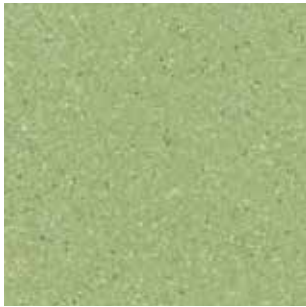
K811A-523
LIGHT GREEN



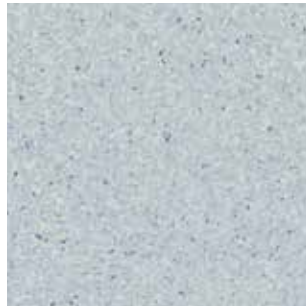
K811A-525
MIST GREEN



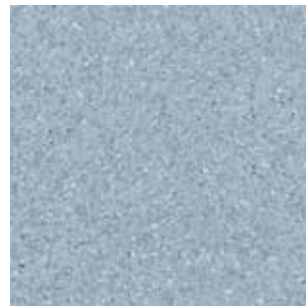
K811A-526
FOREST



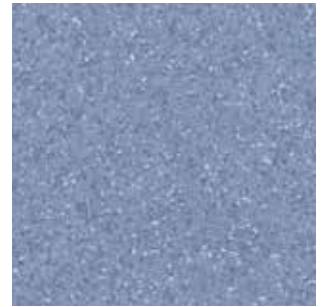
K811A-532
PEAK GREEN



K811A-627
DAHLIA SKY



K811A-628
WATER BLUE



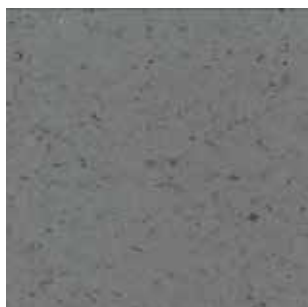
K811A-629
BLUE SKIES



K811A-630
ULTRA BLUE



K811A-734
WISTERIA



K825A-012
BLACKSTAR



K825A-035
MIDNIGHT



K825A-121
FOG BROWN



K825A-208
MARBLING



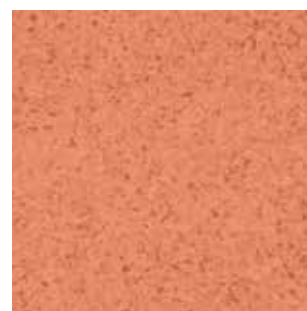
K825A-319
SOFTWOOD



K825A-325
PLUME YELLOW



K825A-423
TINOTI



K825A-438
KERMES



K825A-506
NEPTUNE

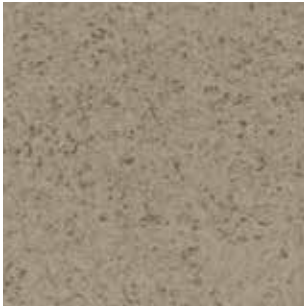


K825A-609
COAST BLUE

TECHNICAL SPECIFICATIONS

COATING

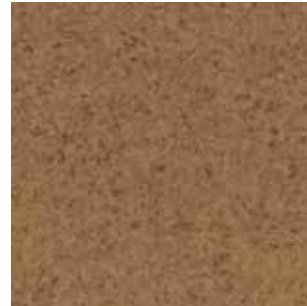
CLASSIFICATION	EN 685	CLASS	DIAMOND 10 COMMERCIAL: 34 INDUSTRIAL: 43
ROLL WIDTH	EN 426	M	2
ROLL LENGTH	EN 426	M	15-20
OVERALL THICKNESS	EN 428	MM	2
DIMENSIONAL STABILITY	EN 434		X: <0.4%; Y: <0.4%
FIRE RESISTANCE/FLAMMABILITY	EN 13501-1	CLASS	Bfl-s1
SLIP RESISTANCE	DIN 51130	GROUP	R9
TVOC EMISSIONS	ISO 16000-6		Release in 28 days <5 µg/m ³
RESIDUAL INDENTATION	EN 433	MM	0.03
WEAR RESISTANCE	EN 649	GROUP	T
COLORFASTNESS	ISO 105-B02	RATING	≥6
STATIC ELECTRICAL PROPENSITY	EN 1815	KV	≤2.0
STAIN RESISTANCE	EN 423		NO STAIN 0
BACTERIA RESISTANCE	ISO 846: PART C		NO OBSERVED GROWTH



K825A-034
SESAME



K825A-104
APRICOT



K825A-122
STARMOND



K825A-237
MONTAIGNE



K825A-317
AMBER



K825A-336
GINGER GOLD



K825A-414
APOLLO



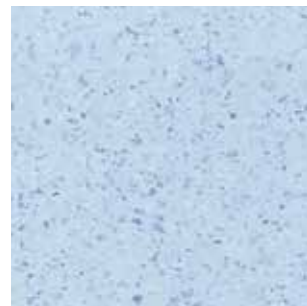
K825A-430
CHESTNUT



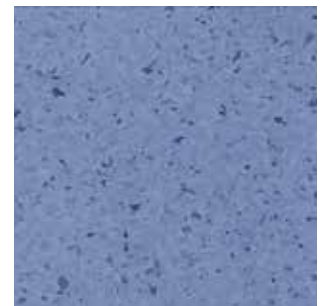
K825A-515
GROVE GREEN



K825A-531
LICHEN GREEN



K825A-613
SKYMAN



K825A-623
NAVY BLUE



K825A-632
PERSIA BLUE



K825A-733
HYDRANGEA



FPH5300271
COOL WHITE



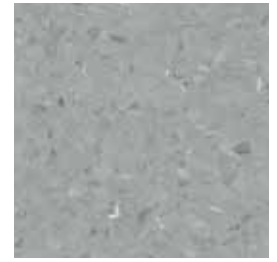
FPH5301271
GRAY LIGHT



FPH5302271
DEEP GRAY



FPH5303271
ALMOST BLACK



FPH5304271
NATURAL GRAY LIGHT



FPH5305271
NATURAL GRAY



FPH5306271
NATURAL GRAY DARK



FPH5307271
ROCK DUST LIGHT



FPH5308271
ROCK DUST MID



FPH5310271
ROCK BROWN



FPH5311271
NATURAL WHITE



FPH5312271
NATURAL



FPH5313271
NATURAL TONE



FPH5315271
LIGHT CHOCOLATE



FPH5316271
POWDER CHOCOLATE



FPH5317271
MILK CHOCOLATE



FPH5319271
SAND LIGHT



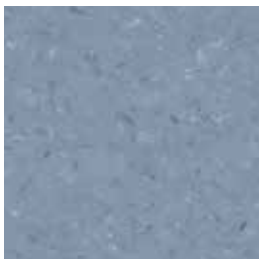
FPH5320271
SAND MID



FPH5328271
GRAYED BLUE LIGHT



FPH5329271
GRAYED BLUE MID



FPH5350271
INDIGO MID



FPH5351271
INDIGO



FPH5358271
SOFT GREEN LIGHT



FPH5362271
REFRESH GREEN MID



FPH5402271
ALL FIRED UP



FPH5403271
BROWN UMBRA



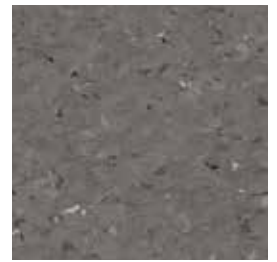
FPH5406271
OCEAN BLUE



FPH5408271
LIME GRASS



FPH5420271
LITTLE BLACK BOOK



FPH5421271
HAZEL



FPH5422271
WALNUT



FPH5423271
GOLDEN SUN



FPH5424271
ZAFFRON



FPH5426271
FLAMINGO



FPH5425271
TANGERINE



FPH5427271
PERFECTLY PLUM



FPH5428271
HYDRANGEA



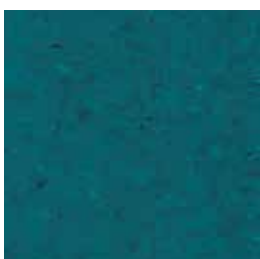
FPH5429271
ORCHID MIST



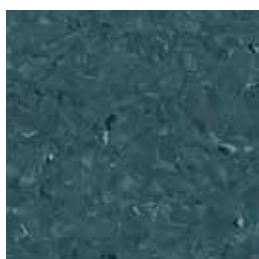
FPH5431271
MOSAIC BLUE



FPH5432271
REGATTA



FPH5433271
BLUE LAGOON



FPH5434271
MAZARINE BLUE



FPH5435271
PROMISE GREEN



FPH5436271
MAIZE YELLOW



FPH5437271
GOLD LEAF

TECHNICAL SPECIFICATIONS

COATING

CLASSIFICATION	EN 685	CLASS	DIAMOND 10 COMMERCIAL: 34 INDUSTRIAL: 43
ROLL WIDTH	EN 426	M	2
ROLL LENGTH	EN 426	M	15-20
OVERALL THICKNESS	EN 428	MM	2
DIMENSIONAL STABILITY	EN 434		X: <0.4%; Y: <0.4%
FIRE RESISTANCE/FLAMMABILITY	EN 13501-1	CLASS	Bfl-s1
SLIP RESISTANCE	DIN 51130	GROUP	R9
TVOC EMISSIONS	ISO 16000-6		Release in 28 days <5 µg/m³
RESIDUAL INDENTATION	EN 433	MM	0.03
WEAR RESISTANCE	EN 649	GROUP	T
COLORFASTNESS	ISO 105-B02	RATING	≥6
STATIC ELECTRICAL PROPENSITY	EN 1815	KV	≤2.0
STAIN RESISTANCE	EN 423		NO STAIN 0
BACTERIA RESISTANCE	ISO 846: PART C		NO OBSERVED GROWTH



FPH5438271
LIGHT AUBERGINE

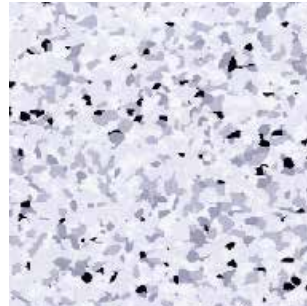


FPH5532271
GRAYED BLUE

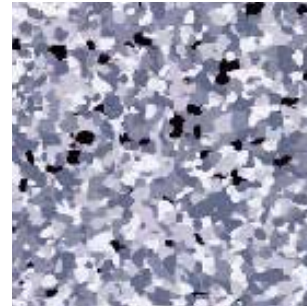




2316-001
WHITE STONE



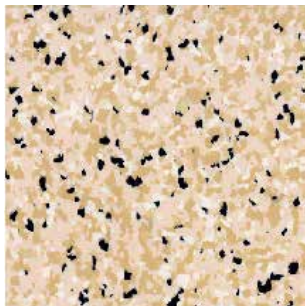
2316-002
LIGHT GREY



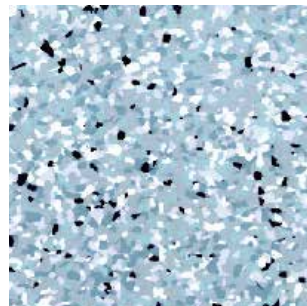
2316-003
TERRE GREY



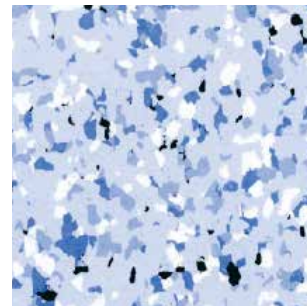
2316-201
VINTAGE CREAM



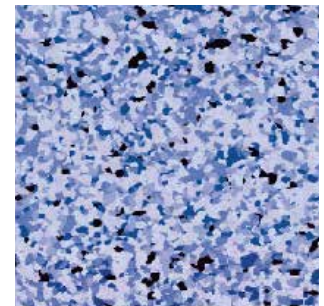
2316-301
PEACE YELLOW



2316-501
LIGHT GREEN



2316-601
AQUA BLUE



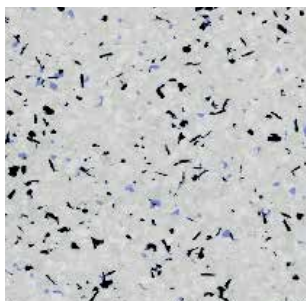
2316-602
FLAKE BLUE

TECHNICAL SPECIFICATIONS

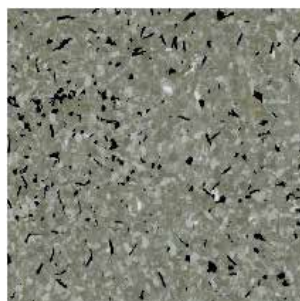
TYPE OF FLOORING	EN 649 / EN ISO 10581		VINYL SYNTHETIC FLOORCOVERING WITH CONDUCTIVE BACKING
CLASSIFICATION	ISO10874 - EN685	CLASS	DOMESTIC: 23 COMMERCIAL: 34 INDUSTRIAL: 43
ROLL WIDTH	EN 426 / EN ISO 24341	M	2
ROLL LENGTH	EN 426 / EN ISO 24341	M	15-20
OVERALL THICKNESS	EN 428 / EN ISO 24346	MM	2
STATIC ELECTRICAL CHARGE	EN 1815	kV	≤2.0
THERMAL RESISTANCE	EN 12667	m ² k/w	0.04
FIRE RESISTANCE/FLAMMABILITY	EN 13501-1	CLASS	Bfl-s1
RESIDUAL INDENTATION	EN 433/ EN ISO 24343	MM	≤0.05
COLORFASTNESS	ISO 105-B02	RATING	≥6
SURFACE RESISTANCE	EN 1081	Ω	1.0X10 ⁴ - 1.0X10 ⁶



1316-012
VINTAGE SILVER



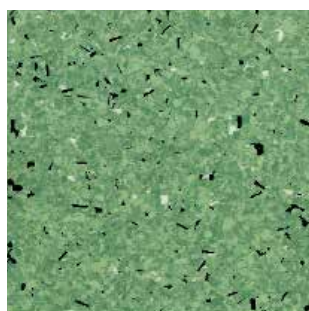
1316-011
SNOW GREY



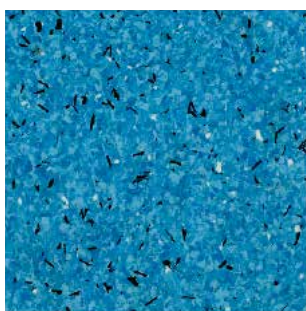
1316-013
FLAKE STONE



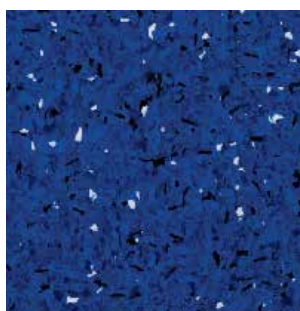
1316-311
WHALE CREAM



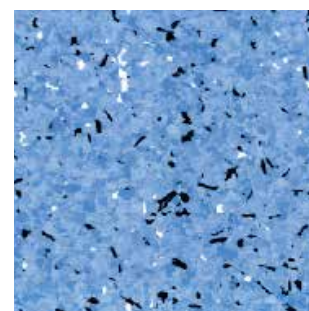
1316-511
LIGHT JADE



1316-605
AQUA STAR



1316-610
SKI BLUE



1316-611
SKY WALK

TECHNICAL SPECIFICATIONS

TYPE OF FLOORING EN 649 / EN ISO 10581

CLASSIFICATION ISO10874 - EN685

ROLL WIDTH EN 426 / EN ISO 24341

ROLL LENGTH EN 426 / EN ISO 24341

OVERALL THICKNESS EN 428 / EN ISO 24346

STATIC ELECTRICAL CHARGE EN 1815

THERMAL RESISTANCE EN 12667

FIRE RESISTANCE/FLAMMABILITY EN 13501-1

RESIDUAL INDENTATION EN 433/ EN ISO 24343

COLORFASTNESS ISO 105-B02

SURFACE RESISTANCE EN 1081

CLASS

M 2

M 15-20

MM 2

kV ≤2.0

m²k/w 0.04

CLASS Bfl-s1

MM ≤0.05

RATING ≥6

Ω 1.0X10⁶ - 1.0X10⁹

VINYL SYNTHETIC FLOORCOVERING
WITH CONDUCTIVE BACKING

DOMESTIC: 23

COMMERCIAL: 34

INDUSTRIAL: 43



1815/2815-021
LIGHT BLUE



1815/2815-034
LEAF GREEN



1815/2815-050
BROKEN SILVER



1815/2815-054
STONE GREY



1815/2815-061
ANTIQUE BEIGE

TECHNICAL SPECIFICATIONS

TYPE OF FLOORING EN 649 / EN ISO 10581

CLASSIFICATION ISO10874 - EN685

ROLL WIDTH EN 426 / EN ISO 24341

ROLL LENGTH EN 426 / EN ISO 24341

OVERALL THICKNESS EN 428 / EN ISO 24346

STATIC ELECTRICAL CHARGE EN 1815

THERMAL RESISTANCE EN 12667

FIRE RESISTANCE/FLAMMABILITY EN 13501-1

RESIDUAL INDENTATION EN 433/ EN ISO 24343

COLORFASTNESS ISO 105-B02

SURFACE RESISTANCE EN 1081

CLASS

M

M

MM

kV

m²k/w

CLASS

MM

RATING

Ω

VINYL SYNTHETIC FLOORCOVERING
WITH CONDUCTIVE BACKING

DOMESTIC: 23

COMMERCIAL: 34

INDUSTRIAL: 43

2

15-20

2

≤2.0

0.04

Bfl-s1

≤0.05

≥6

ESD - 1.0X10⁶ - 1.0X10⁹

CONDUCTIVE - 1.0X10⁴ - 1.0X10⁶

INTRODUCTION LUXURY VINYL TILES

What is Luxury Vinyl Tiles?

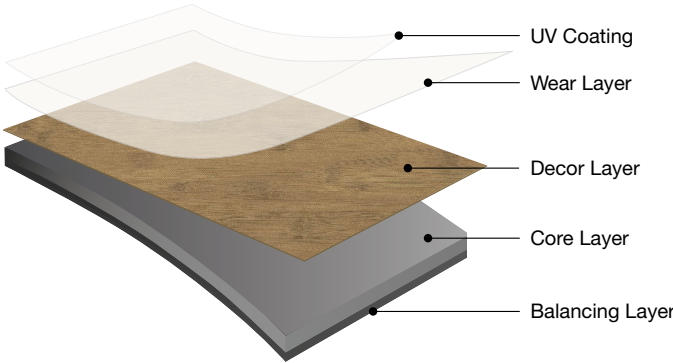
As a modern and innovative material, Luxury Vinyl Tiles (LVT) is the first choice for aesthetic and functional high-quality room concepts.

Luxury Vinyl Tiles shines in both private and commercial contexts when it comes to maximum durability. With LVT, the authentic reproduction of near-natural materials succeeds in astonishing perfection.

Goodrich's LVT offers an optimal solution for every usage scenario and enables uniformity across the various vinyl products - whether as installed floating or glue-down.

Combining strength, performance, luxury and style, the latest LVT are here to provide a floor covering with lasting beauty at affordable prices.

Ranging from beautiful hardwood to attractive mineral designs, every plank is designed to bring the freshness of nature indoors, for a year-round natural effect. Each and every plank is unique and aims to cater to every design need.









GNV-001 IVORY OAK



GNV-003 ASH OAK



GNV-005 VINTAGE OAK



GNV-007 FRENCH MAPLE



GNV-010 WEATHERED TIMBERLAND



GNV-012 CLASSIC WALNUT



GNV-014 LIGHT PINE



GNV-016 LIMEWASH



GNV-018 GRAND MARBLE



GNV-002 SILVER OAK



GNV-004 AMERICAN CHESTNUT



GNV-006 ARTISAN PARQUET



GNV-008 PREMIER OAK



GNV-011 EUROPEAN OAK



GNV-013 PEWTER OAK



GNV-015 SMOKE GREY



GNV-017 GREYSTONE

TECHNICAL SPECIFICATIONS

SIZE		MM	177.8 X 1219.2 / 457.2 X 914.4
OVERALL THICKNESS	EN ISO 24346	MM	5
THICKNESS OF WEAR LAYER		MM	0.55
PACKAGING DETAIL			2.168 sqm / carton 2.09 sqm / carton
DIMENSIONAL STABILITY	EN ISO 23999		≤0.25%
FIRE RESISTANCE/FLAMMABILITY	EN 13501-1	CLASS	Bfl-s1
SLIP RESISTANCE	EN 13893 / DIN 51130		DS / R10
CHEMICAL RESISTANCE	EN ISO 26987		GOOD





GND-001 GREY ANTHRACITE



GND-002 COLD CEMENT



GND-003 ASH GREY



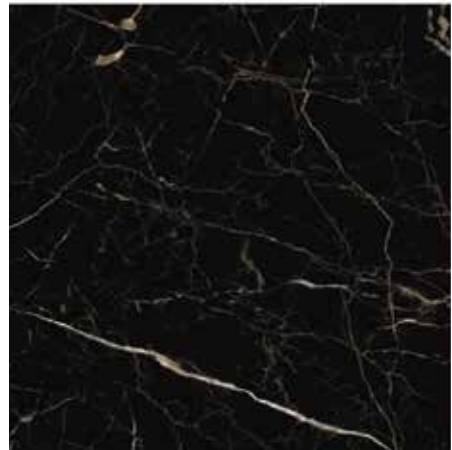
GND-004 OAK



GND-005 MAPLE



GND-006 SUNBLEACHED



GND-007 GALAXY



GND-008 TERRAZZO

TECHNICAL SPECIFICATIONS

SIZE		MM	184.5 X 1219.2 / 609.6 X 609.6 / 304.8 X 609.6
OVERALL THICKNESS	EN ISO 24346	MM	3
THICKNESS OF WEAR LAYER		MM	0.55
PACKAGING DETAIL			3.37 sqm / carton 3.72 sqm / carton 3.34 sqm / carton
DIMENSIONAL STABILITY	EN ISO 23999		≤0.25%
FIRE RESISTANCE/FLAMMABILITY	EN 13501-1	CLASS	Bfl-s1
SLIP RESISTANCE	EN 13893 / DIN 51130		DS / R10
CHEMICAL RESISTANCE	EN ISO 26987		GOOD



ORCHID 3000

LUXURY VINYL TILES

STOCKING

SIZE : 457.2 X 457.2MM
PACKAGE : 15PCS/BOX (3.14M²)



NOW-3061
EUROPEAN OAK PARQUET

SIZE : 600 X 600MM
PACKAGE : 9PCS/BOX (3.24M²)



NOT-3641
SAND CONCRETE

SIZE : 914.4 X 914.4MM
PACKAGE : 6PCS/BOX (5.02M²)



NOT-3994
SCRATCHED CONCRETE

SIZE : 180 X 1200MM
PACKAGE : 15PCS/BOX (3.24M²)



NOW-3065

AUSTRALIAN WOOD



NOW-3066

AUSTRALIAN WOOD

SIZE : 186 X 940MM
PACKAGE : 18PCS/BOX (3.15M²)



NOW-3003

OAK



NOW-3063

WASHED OAK

SIZE : 457.2 X 914.4MM
PACKAGE : 8PCS/BOX (3.34M²)



NOT-3493

PULPIS MARBLE



NOT-3494

PULPIS MARBLE

TECHNICAL SPECIFICATIONS

OVERALL THICKNESS	EN ISO 24346	MM	3
THICKNESS OF WEAR LAYER		MM	0.3
DIMENSIONAL STABILITY	ISO 23999 / EN 434		≤ 0.10% (NORM: ≤ 0.25)
FIRE RESISTANCE/FLAMMABILITY	EN 13501-1	CLASS	Bfl-s1
SLIP RESISTANCE	EN 13893 / DIN 51130		DS / R10
CHEMICAL RESISTANCE	EN ISO 26987		GOOD





FQ2401



FQ2403



FQ2505



FQ2601



FQ2604



FQ2402



FQ2502



FQ2506



FQ2603



FQ2605

TECHNICAL SPECIFICATIONS

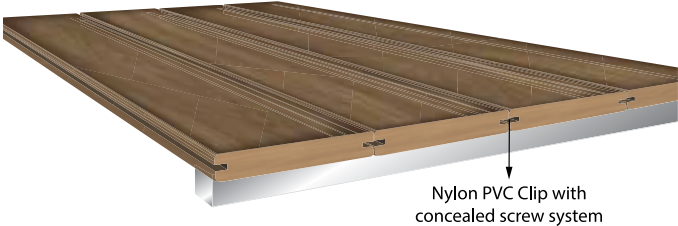
SIZE		MM	250 X 1000
OVERALL THICKNESS		MM	3
PACKAGING DETAIL			16 pieces / carton 4 sqm / carton
CLASSIFICATION	EN 685	CLASS	COMMERCIAL: 33
DIMENSIONAL STABILITY	ISO 23999 / EN 986		≤ 0.10% (NORM: ≤ 0.25)
FIRE RESISTANCE/FLAMMABILITY	EN 13501-1	CLASS	Bfl-s1
SLIP RESISTANCE	DIN 51130		R11
RESIDUAL INDENTATION	ISO 24343-1		≤ 0.1mm
CHEMICAL RESISTANCE	ISO 26987		NO DEFECTS
IMPACT SOUND INSULATION	ISO 10140-3	dB	9

INTRODUCTION HOMOGENEOUS RECONSTITUTED TIMBER

What is Homogeneous Reconstituted Timber?

This system consists of solid homogeneous planks of reconstituted timber (composite timber) which enables resanding and refurbishing works after years of wear. It has minimal shrinkage and expansion when exposed to environmental changes. Its fabrication processes allow better dimensional stability as compared to natural hardwood products.

ONEWOOD Decking consists of unique convex profile which allows better water runoff. With the PVC clip system, the screws used for installation can be concealed for a neater outlook.







ONEWOOD DECKING

HOMOGENEOUS RECONSTITUTED TIMBER DECKING



NATURAL



CLEAR



DEEP BIRCH



GOLDEN TEAK



MATURED TEAK



DARK WALNUT



EBONY

TECHNICAL SPECIFICATIONS

STANDARD DIMENSIONS


THICKNESS (MM)	WIDTH (MM)	LENGTH (MM)
22	148	2500 AND/OR 3000
24	148	
20	95	



Stay Connected

www.goodrichglobal.com | info@goodrichglobal.com

 [/goodrich_global](https://www.instagram.com/goodrich_global)

 [/goodrichglobal](https://www.pinterest.com/goodrichglobal)

 [/Goodrich.Global.Singapore](https://www.facebook.com/Goodrich.Global.Singapore)

 [/Goodrich.Global](https://www.linkedin.com/company/Goodrich.Global)

 [/goodrichglobal](https://www.tiktok.com/@goodrichglobal)

 [/GoodrichGlobalOfficial](https://www.youtube.com/GoodrichGlobalOfficial)