

GOODRICH SOLUTIONS
FLOORING
EZLAY



Goodrich Global
SINCE 1983

LUXURY VINYL TILES - LOOSE LAY



*We've got you
Covered!*

GEFFVINYL LVT

2021 - 2023.12

COMMERCIAL | HOSPITALITY | RESIDENTIAL | EDUCATION

WOOD

STOCKING



GEL-001

LATTE OAK



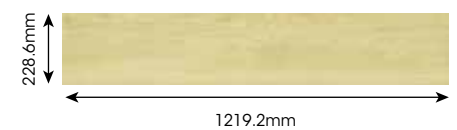
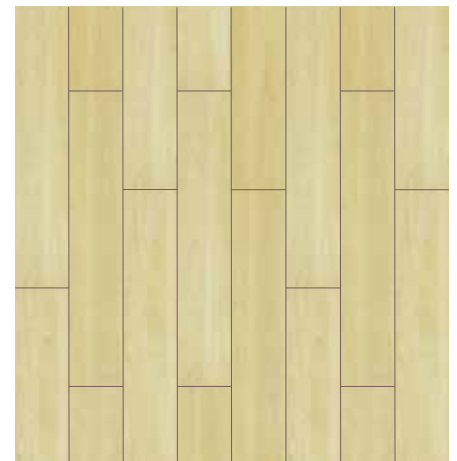
GEL-002

FROSTY OAK



GEL-003

ASH OAK



Dimensions: 1219.2mm x 228.6mm
Packaging: 2.23m² / Ctn

MARBLE

STOCKING



GEL-004 GRAND MARBLE



GEL-004

GRAND MARBLE



Dimensions: 304.8mm x 609.6mm
Packaging: 2.23m² / Ctn

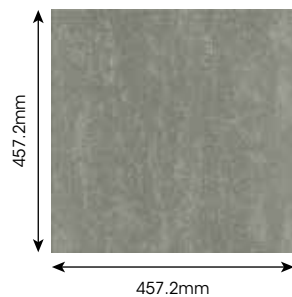
CARPET



GEL-008
SILVER KHAKI



GEL-009
GREY FOSSIL



Dimensions:
457.2mm x 457.2mm
Packaging:
1.881m² / Ctn



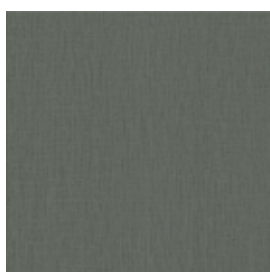
GEL-008 SILVER KHAKI

WOVEN VINYL

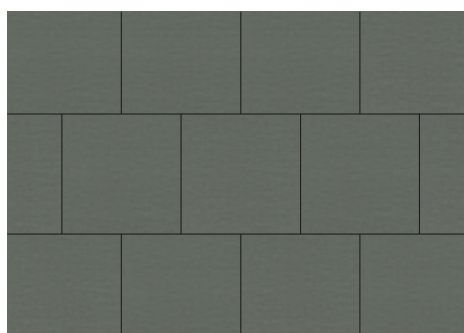
STOCKING



GEL-006 COAST KNIT



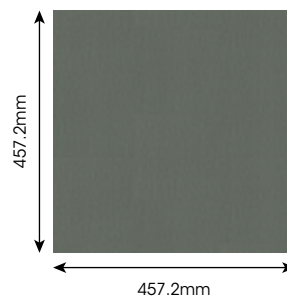
GEL-005
GREY KNIT



GEL-006
COAST KNIT



GEL-007
NEPTUNE KNIT



Dimensions:
457.2mm x 457.2mm
Packaging:
1.881m² / Ctn

Advantages



Certified
Low VOCs



Easy
Installation &
Replacement



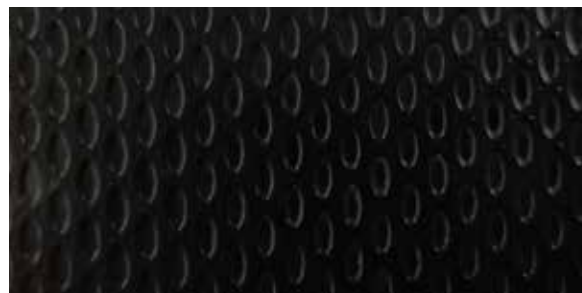
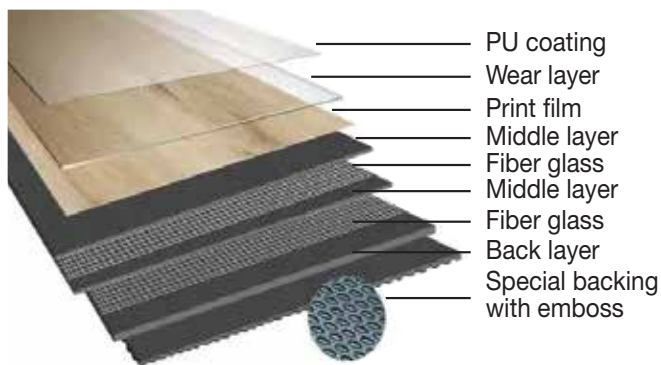
Eco-friendly



Non-slip
Backing



Superior
Dimensional
Stability



Technical Information

| Item | Standard Reference | Main Parameter |
|------------------------------------|--------------------------------|---|
| Name | | Loose Lay 5.0/0.3mm |
| Size | EN ISO 24342 | Deviation $\leq 0.15\%$ of nominal length up to 0.5mm maximum |
| Overall thickness | EN ISO 24346 | 5.0mm |
| Wear layer thickness | EN ISO 24340 | 0.3mm |
| Total mass per unit area | EN ISO 23997 | +13%/-10% |
| Squareness and straightness | EN ISO 24342 | Pass |
| Dimensional stability | EN ISO 23999 | $\leq 0.25\%$ |
| Curling after exposure to heat | EN ISO 23999 | $\leq 2\text{mm}$ |
| Usage Classification | EN ISO 10874 | 23,31 |
| Abrasion resistance | EN 660-2 | Group T |
| Slip Resistance | EN 13893 | DS |
| | DIN 51130 | $\geq R9$ |
| Color fastness to artificial light | EN ISO 105 B02 | ≥ 6 |
| Flexibility | EN ISO 24344 | 20mm |
| Effect of castor chair | ISO 4918 | Pass |
| Impact Sound Reduction | ASTM E 492-09 | IIC=58 |
| Chemical resistance | EN ISO 26987 | GOOD |
| Toxicity | EN 71 | Non-toxic |
| Resistance to staining | EN ISO 26987 | GOOD |
| Heavy metals | Rohs | ND |
| Phthalate | EN 14372 | ND |
| Formaldehyde Emission | EN 717-1 | E1 |
| Fire Classification | EN 13501-1 | Bf1-s1 |
| Underfloor heating | | Not more than 28°C |
| SVHC | REACH | Pass |
| VOC | DIBT/AgBB | Pass |
| | French VOC Regulation | A+ |
| | California Specification 01350 | Pass |



GOODRICH SOLUTIONS

FLOORING

EZLAY

WITH GOODRICH,

Your habitat becomes

A gallery of

Your **self-expressions;**

A canvas for

Your **creativity;**

A space for

Your **soul;**

A showcase of


Your **taste for life;**



Stay Connected - www.goodrichglobal.com | info@goodrichglobal.com

 /Goodrich.Global.Singapore

 /goodrich_global

 /GoodrichGlobal

 /GoodrichChina

 /GoodrichGlobal

 /goodrichglobal

 /GoodrichHQ

 /Goodrich_Global

SINGAPORE [HQ] | CHINA | HONG KONG (CHINA) | INDIA | INDONESIA | MALAYSIA | MYANMAR | PHILIPPINES | THAILAND | UNITED ARAB EMIRATES | VIETNAM

Copyright © 2020 Goodrich Global. All rights reserved.